



DLCC RANCH
HONEST CATTLE, REAL RESULTS



**DO NOT FOLLOW
WHERE THE PATH LEADS.
RATHER GO WHERE THERE IS NO PATH
AND LEAVE A TRAIL.**



DLCC RANCH

HONEST CATTLE, REAL RESULTS

26TH

ANNUAL PRODUCTION SALE

SATURDAY, APRIL 28TH

10:30 A.M. - BULLS AVAILABLE FOR VIEWING

12:00 P.M. - ZOETIS ANIMAL HEALTH LUNCH AND Q&A BY JIM PHILLIPS

1:00 P.M. - CATTLE INDUSTRY PROFIT SEMINAR
DR. ERIC MOUSEL (UofMN)
AND DAR GIESS

3:00 P.M. - SALE START

5:00 P.M. PRIME RIB DINNER & SOCIAL

Auctioneer

Col. Trent Stewart.....541-325-3662

Sale Representatives

Bill Angell, Independent.....970-396-5594

Pete Crow, Western Livestock Journal.....303-810-8831

Mike Bolinger, Superior Auctions.....970-380-7253

Sale Contacts

Dar Giess.....320-249-2130

Lane Giess.....320-293-1647

Jared Mumm.....208-308-5785

Reiss Bruning.....407-768-3332

Sale Location

The ranch is located 6 miles East of Pierz on County Road 39, then turn North for 3 miles on County Road 41.

DLCC Ranch
33424 183rd St.
Pierz, MN 56364

Accomodations

Hillbilly Haven, Pierz.....320-468-2095

AmericInn, Little Falls.....320-632-1964

Country Inn & Suites, Little Falls.....320-632-1000

Grand Casino Hotel, Onamia.....800-468-3517

SALE INFORMATION

TERMS AND CONDITIONS

Terms of the sale are cash or check payable at sale location unless satisfactory credit arrangements have been made prior to the sale.

DELIVERY

Delivery is free of charge if you purchase 3 or more animals, or the total purchase exceeds \$5000. Deliveries greater than 400 miles from our location will be prioritized by volume of the order and necessity. If you take your purchase/purchases home within a week of sale date you will receive \$100 off your total bill. No animals will be released until the conclusion of the sale

REGISTRATION AND TRANSFER

All cattle sell with registration certificates. When making settlement, please leave specific instructions for transfer.

LIABILITY

Everyone attending the sale does so at their own risk. DLCC assumes no liability for any accidents or property loss.

HERD HEALTH

We take the needed steps to sell cattle according to the State of Minnesota animal health regulations. All cattle are tested for Johnes and BVD. Females are vaccinated for Brucellosis and all bulls sell with a breeding soundness exam certificate. Out-Of-State health papers will be provided and arranged upon delivery.

ANNOUNCEMENTS

Announcements made on sale day will supersede any information contained in the catalog.

EPD's

Expected Progeny Differences (EPD's) are provided by the North American South Devon Association. EPD's are current as of April 2, 2018.

GUARANTEE

All bulls are guaranteed for the first breeding season. The first breeding season is defined as 90 days from the first turnout of the bull. A replacement bull at equal or lesser value will be provided if a bull is available. If a bull is replaced at an agreed lesser value a sale credit of the difference will be issued for the next sale. If a bull cannot be replaced, a sale credit will be issued of the same value as purchased for the next sale. If a bull is injured within a year of purchase, a sale credit will be issued minus 25% of purchased value. Please notify us of any injury as soon as possible and **prior to the bull being sold for salvage.**

DISPOSITION

We pride ourselves in the docility of our cattle. All cattle sell with our full trust in their disposition.

DISCOUNTS

A purchase of 5 or more bulls will receive a volume discount of 5% off the total bill. Any cattle taken home within a week of the sale will receive \$100 off total bill. **Need semen?** Bring your tank and receive 15% off a semen purchase.

ABSENTEE BIDS

Absentee bids may be placed by phone and mail. Contact Dar, Lane, or Jared before or on sale day for phone bidding during the auction.

SEMEN INTEREST

DLCC retains the rights to 1/3 semen interest on all bulls in the offering. Should a bull start accumulating large semen sales, DLCC protects our rights to 1/3 of the semen sale revenue. **You will own full possession and salvage value of the bull.** We will retain our 1/3 interest if the bull is sold to a third party. If we choose to collect semen on a bull it will be on our dime during the off-season.

CATTLE CARE & DEVELOPMENT

DLCC will continue to house and feed bulls & females offered in our auction until May 30th free of charge.

SALE HOSTING AND ONLINE BIDS

The sale will be hosted by Superior Productions. If you are unable to make it sale day, our auction will be broadcast live on superiorlivestock.com. If you are an active bidder and would like to place bids through the internet, there will be a click-to-bid web portal set up through superiorclicktobid.com. The following page will have further information as to how to become an online bidder.

Please contact our Superior reps for any questions you may have

Jason Barber.....817-378-3326

Justin Warren.....970-367-0035



HOW TO PARTICIPATE AS AN ABSENTEE BUYER

We have made preparations to bid and buy your livestock through Superior Productions' "Call or Click-To-Bid" service for those unable to attend in person on sale day. Please note that all of the lots in the sale will also be available for viewing online prior to sale day at www.superiorlivestock.com.

HERE'S HOW IT WORKS

Turn in Bids Over the Phone. This is our traditional method of buying livestock. To get started simply go online to www.superiorlivestock.com and click on the tab titled "Register for a Buyer Number." Select the registration form for Superior Productions and print the registration form, fill it out and fax it in to Superior Productions at (817) 378-3380 with a signature on it. You can also mail it in to the address provided on the form. Upon receipt of this information Superior will call you with a buyer's number and the bid line phone number that you will use on sale day to place bids over the phone.

Click-To-Bid. This is our online bidding platform where you are able to turn in bids by "clicking" on the internet. Please note that high speed internet is required – this is not for dial-up or satellite internet. Registration is free, but you must become a member of www.superiorclicktobid.com to sign up. Becoming a member is easy – just go to the homepage of www.superiorclicktobid.com and follow the outlined steps to get started. Input your information and select a username and password. You will receive an e-mail confirming you are a member. From that point forward, you will sign in and select the sale you would like to register for and once approved, you will receive an e-mail confirming which sale you are now registered for. You will then be able to bid over a traditional computer or a tablet (but not a smart phone).

Viewing the Auction. The sale will be broadcast live on the internet at www.superiorclicktobid.com and www.superiorlivestock.com – just go to the home page and select the auction. If you wish to turn in bids over the phone the simplest way to watch the auction is from the homepage of www.superiorlivestock.com – you can even watch the auction on your smart phone or tablet from there. Remember, you can call in to bid over the phone when watching on the internet if you have registered for that service, but you must be a member of www.superiorclicktobid.com to "click-to-bid" online.

Bidders who are successful in making purchases will be contacted by the DLCC ranch after the sale to settle payment and make shipping plans. **IF YOU NEED ANY ASSISTANCE PLEASE CALL SUPERIOR AT (800) 422-2117.**

CONTENTS

Philosophy of Genetic Selection, Dr. Eric Mousel.....	8
Our Philosophy - <i>Honest Cattle, Real Results</i>	10
\$Profit Explained.....	14
Testimonials - Our customers share their success.....	22
DLCC Customer Services - You Buy, We Provide.....	34
Honest Cattle, Happy Corgis - Puppies Available Soon.....	37
Ranchers Helping Ranchers.....	60
Reference Sires.....	62
NASDA EPD's - 2017 Non- Parents.....	64

SALE ORDER

Purebred yearling Bulls.....	12-27
DLCC Copy Cat 69C sons.....	12
DLCC Dodge City 78Y sons.....	23
DLCC Stockman 39C sons.....	15
DLCC Durango 26Z sons.....	25
DLCC Manhattan 33Z sons.....	16
Gum Hill Red 530 sons.....	25
DLCC Cowboy Jo 81C sons.....	18
MMM Untouchable W810 sons.....	26
Poundmaker Yearling Bulls.....	28-42
Choice of Fall Bull Calves.....	43
18 Month & 2-Year Old Bulls.....	44-45
Open Yearling Heifers.....	46-53
Open Fall Heifers.....	54-55
Fall Bred Heifers.....	56-57
Donors.....	58-59

Leachman Elite South Devon

DLCC Dodge City 78Y



Semen \$20, discounts available.

Born: 4/22/11
Breed: 100DS
NADSA#: 2751932
Homozygous Polled
Heterozygous Black

DLC The Rock 52
Sire: *SBCC Womanizer 9137*
SBCC Midnight Gwen 5134
DLCC Stamina 138R
Dam: *DLCC Perfect Enuf 28W*
DLCC Perfect Enuf 4M

Dodge City is a big spread, high \$Profit South Devon sire with a 0.0 ABC BW EPD! He has emerged in the NASDA database as one of the easiest calving sires in the breed. Based on this proof, Leachman Cattle of Colorado purchased Dodge City and five of his yearling sons from DLCC Ranch. We have used these bulls in our test and cooperator herds, so look for Dodge City sired sons in future bull sales and semen catalogs. Here is a way to create maximum hybrid vigor – even on British-bred females.

Owners: Leachman Cattle of Colorado and DLCC Ranch.

Leachman \$Profit™ Indexes		
		\$16,530
Percentile Rank - Top 1%		
\$Ranch	88	1%
\$Feeder	75	41%
Feed:Gain	0.04	53%
Intake	34	48%
Accuracy	★	
C. Ease	★★★	
Growth	★★★★★	
Maternal	★★★★★	
Feed/Carc	★★★★★	
Disposition	★★	
Leachman ABCs as of 12/22/17		
BW	0.0	2%
WW	71	1%
YW	97	2%
MILK	24	Avg: 21
SC	0.40	24%
HT	0.51	Avg: 0.61
MAT WT	1	Avg: 16
REA	0.30	51%
IMF	0.40	1%
CAR WT	827	–
BF	0.02	1%

Leachman \$Profit™ Indexes		
		\$22,287
Percentile Rank - Top 1%		
\$Ranch	78	1%
\$Feeder	155	1%
Feed:Gain	0.06	63%
Intake	28	41%
Accuracy	★	
C. Ease		
Growth	★★★★★	
Maternal	★★★★★	
Feed/Carc	★★★★★	
Disposition	★★★	
Leachman ABCs as of 12/22/17		
BW	0.4	4%
WW	80	1%
YW	115	1%
MILK	32	Avg: 21
SC	0.24	43%
HT	0.51	Avg: 0.61
MAT WT	14	Avg: 16
REA	0.50	8%
IMF	0.49	1%
CAR WT	861	–
BF	-0.02	24%

Born: 4/9/15
Breed: 100DS
NADSA#: 208807
Polled
Heterozygous Black

SBCC Womanizer 9137
Sire: *DLCC Dodge City 78Y*
DLCC Perfect Enuf 28W
DLC Mr Rock 41W
Dam: *DLCC Topaz 20Y*
DLCC Clare 73U



Dar Giess has bred and raised several of the top South Devon animals in our system, including: Copy Cat, Dodge City and Shur Loc.

DLCC Copy Cat 69C



Semen \$25, discounts available.

Copy Cat has one of the highest value, most well-balanced profiles in the South Devon breed. Moderate birth, top 1% growth, tremendous carcass merit and all the advantages of F1 hybrid vigor lead this bull to top 1% tabulations for ALL the Leachman \$value indexes. Copy Cat should be considered in all composite breeding programs that are looking for more hybrid vigor and to expand their gene pool.

Owners: Leachman Cattle of Colorado and DLCC Ranch.



Call Your Area Rep or (970) 444-BULL to Order Semen Today!
Request a Herd Sire Directory at www.leachman.com



PHILOSOPHY OF GENETIC SELECTION

THE VALUE OF GOOD GENETICS

The type of bulls selected to contribute to a genetic program is one of the most important decisions cow-calf operators will make. These decisions will set the direction of the cowherd and the calf crop for many years to come.

However, it may not be a real surprise to learn that the majority of bulls purchased in the U.S. cattle industry are selected primarily based on visual attributes rather than for traits that contribute to long-term profitability at the cow-herd level.

Even with more relevant (sometimes irrelevant) data available on any potential sire from a reputable seed stock program than before; the propensity for many producers to select bulls almost entirely based on visual appraisal hasn't really changed much over the years.

Why is this the case you might ask? It is probably a multi-faceted answer to that question, but the central theme likely revolves around some variation of the supposition that most cow-calf producers do not really have a guiding philosophy to their genetic program.

They may select specifically for calving ease or something similar; but other than that, they generally are very vague on what exactly they are breeding for.

Similarly, cow-calf producers that maybe do have a specific thing they are breeding for, may not have a

very good grasp on how to achieve the specific target they are trying to hit, or simply do not have the discipline to repeatedly select for those specific criteria against all of the noise.

As a related tangent, there is an alarming number of cow-calf operators that do have a guiding philosophy to their breeding program, but the philosophy itself may not, in reality, be achieving the results they believe that it does.

As an example, every year I have a significant number of producers call about mid-summer looking for 'anything with a set of nuts' or 'something that will make a live calf.' The underlying philosophy here is a suggestion that genetics do not matter to the bottom line and long-term success of a cowherd and thus there is a resistance to invest any capital in replacement breeding stock.

Every time I encounter this philosophy, I can't help but to seriously challenge this thought process, based simply on the fact that in today's calf market, at the average cost of running a cow that has a calf weighing less than 500 lbs, she is a money loser.

That is a sobering statistic as the average weaning weight of calves in Cow Country USA is only slightly over 500 lbs. So, without a sales pitch for fancy bulls or this, or that, or the other; simple mathematics dictates that commercial cow operators with this philosophy do in fact, need more than a set of testicles and will require more than simply a live calf.

It is important to remember that the genetics of those calves will need to offset not only the percentage of calves that don't make it to a breakeven weight, but also to cover the cost of the cows that never produced a calf.

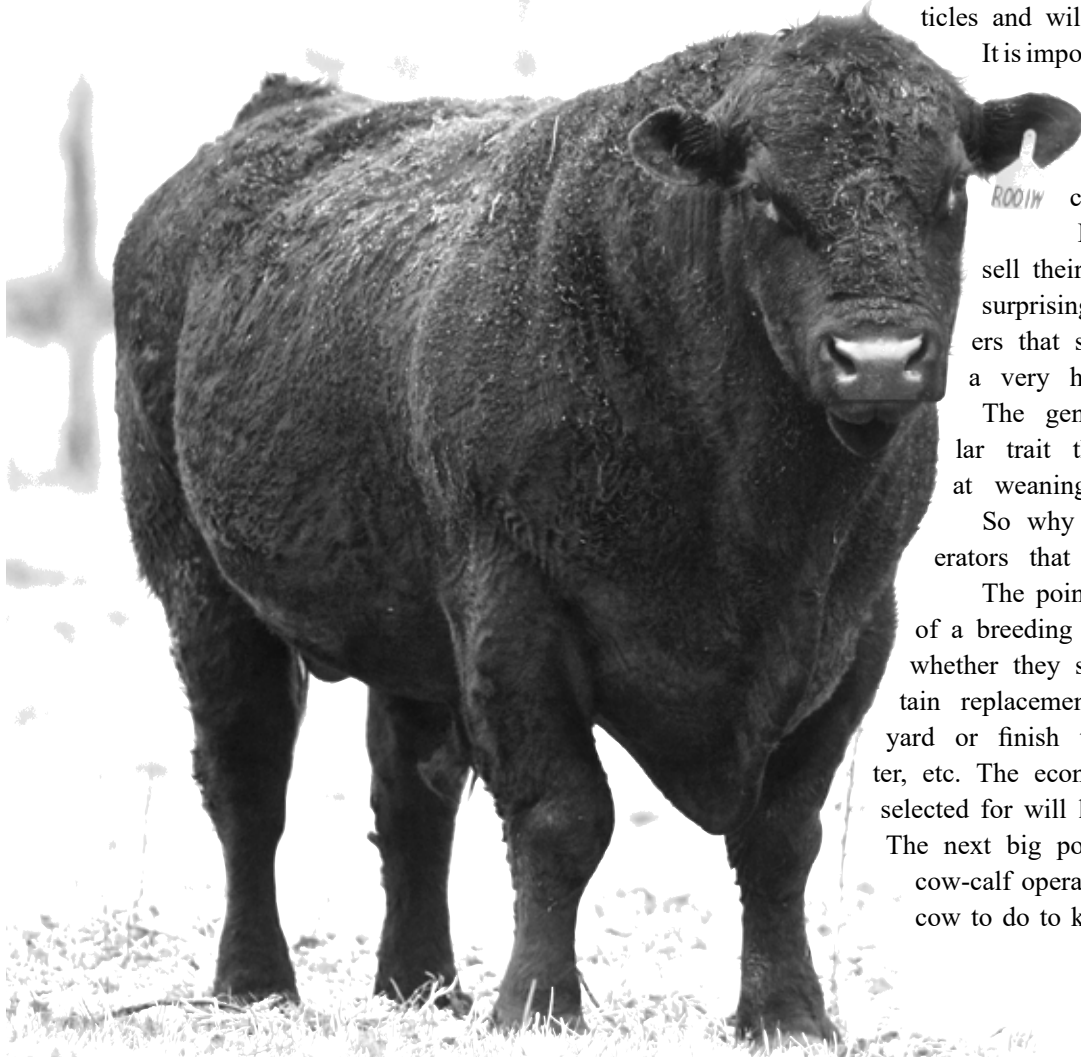
Most cow-calf operators in the USA sell their calves at weaning. However, it is still surprising to me to hear the number of producers that sell their calves at weaning, that place a very high value on selecting for marbling.

The genetic potential to marble is a singular trait that the cow-calf producer that sells at weaning DOES NOT get paid for... ever.

So why then are there so many cow-calf operators that select for marbling you might ask?

The point is, that when evaluating the end point of a breeding program, the operator needs to look at whether they sell at weaning, background calves, retain replacement heifers, retain calves in the feed-yard or finish themselves, or retain through slaughter, etc. The economically relevant traits that should be selected for will largely be determined by this end point.

The next big point of evaluation for most commercial cow-calf operators is thinking about "what do I need a cow to do to keep this program where it needs to be?"



There are many things that will contribute to this question. However, at a minimum I think we can all agree that these four things will be the base requirements.

- Have a live calf - Fertility**
- Rebreed - Fertility**
- Wean a calf over 500 pounds - Productivity**
- Repeat this at least 12 times - Longevity**

So the question then becomes, what criteria should be selected for to achieve these four targets? There are probably a multitude of things that will contribute to achieving these targets, however, I think Tom Lasater of the Beefmaster breed put it best. "A cow outfit need only to select for the six essentials to achieve a focus on long-term profitability in the cow business:"

- Disposition**
- Weight**
- Hardiness**
- Fertility**
- Conformation**
- Milk**

Any number of additional criteria could be named and selected for, but the breeder must keep in mind that the more selection points made for a program, the more disciplined the breeder has to be in finding and evaluating replacement breeding stock.

Another key component of breeding philosophy that I think should at least be considered by any outfit is whether crossbreeding can help achieve the goals set for the program. Besides the wave of exotic breeds that entered the U.S. beef industry in the 1960's and '70's, it probably is no real surprise that the national cow herd is currently mostly straight-bred Angus.

However, it is also no surprise then that cow productivity (weaning weights) has gone up very little since that time when we largely quit crossbreeding beef cattle. The heterosis afforded by crossing two different breeds and thus recovering the accumulated inbreeding depression found in all straight breeds, is the only real boost in production the average cow-calf operator is going to get.

The real decision should probably be based on whether the goals of the program are to capture the individual heterosis as a result of that first cross of parents of different breeds or can the full maternal heterosis; where crossbred cows are mated to a third breed, be netted.

Individual heterosis has been shown to provide about an 8% boost in performance. Maternal heterosis on the other hand will provide an additional 15% boost in production. Heterosis is accumulative, so when both individual and maternal heterosis are captured in a breeding program, a whopping 23% boost in production can result from a solid crossbreeding strategy.

I am not sure I could find a cow-calf operator in the country that wouldn't take a 23% boost in production with little to no additional investment.

Once upon a time, it was fun to talk about using composite breeds in a crossbreeding program, but the reality was that a solid composite seed stock program was a pretty rare thing.

“The expense of purchasing a good bull is about the same as the cost of running a bad bull...”

But now, almost everyone reading this can probably name at least two or three composite seedstock producers in their region.

The final thing that invariably comes up is 'How much should I spend for bulls?' This is a very open-ended question, and I don't necessarily have a very definitive answer for it. There are a couple of benchmarks I think a commercial outfit can use to evaluate what they should be spending for bulls.

My dad always used to say, "The expense of purchasing a good bull is about the same as the cost of running a bad bull. You can pay for it on the front end or the back end, but you'll pay for it either way."

I like to look at it from a little different angle. Many outfits I have talked to cannot get their minds around how a commercial cow outfit can routinely spend \$6,000 - \$7,000 on bulls.

The following table was built to help illustrate the cost of a seedstock bull on a cost per cow basis. Salvage value is an arbitrary value and can range from operation to operation, yet the math still applies. While the estimated number of cows bred per lifetime was figured by assuming a bull will on average breed for 4 years and cover 25 cows as a yearling and 35 cows the subsequent years, which equates to 130 females.

Price Paid	Salvage	Net Cost	Cows Bred/ Lifetime	Net Cost/ Cow/Yr
\$3000	\$1350	\$1650	130	\$12.69
\$4000	\$1350	\$2650	130	\$20.38
\$5000	\$1350	\$3650	130	\$28.07
\$6000	\$1350	\$4650	130	\$35.76
\$7000	\$1350	\$5650	130	\$43.46
\$8000	\$1350	\$6650	130	\$51.15
\$9000	\$1350	\$7650	130	\$58.84

From the table, you can see that the net cost per cow per year of a bull that brought \$7,000 on a sale is just a shade over \$40/cow/year. It seems to me that most commercial outfits kind of have that \$30-\$40/cow in mind when they think about genetic value.

On a net cost per cow per year basis, \$7,000 is not much of a stretch for an outfit that wants above average bulls. I'm not suggesting commercial outfits should go out and spend \$7,000 on bulls, I'm just pointing out the likely philosophical thinking behind this phenomena.

When you break purchase price down to a net cost per cow per year, expensive bulls all of a sudden look much more reasonable.

**Dr. Eric Mousel, University of Minnesota Beef Team
Grand Rapids, MN Experiment Station**

HONEST CATTLE, REAL RESULTS

OUR PHILOSOPHY



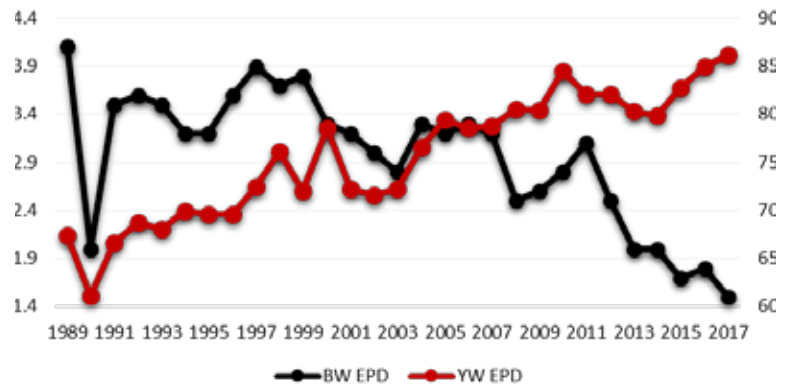
Adaptability

Our genetics can be found in over 30 states across the country, as well as Australia, Canada, and England. Emphasis has been placed on feet structure and body condition so our bulls will be mobile and hold their weight. Our cattle have shown they can adapt to perform in any environment.

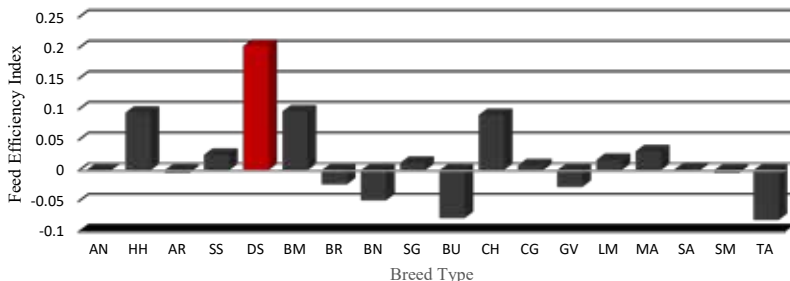
Balanced Genetics

We've made significant progress in making our cattle calve much easier with lower birth weights, yet increasingly improve the weaning and yearling weights. In 2017, 70% of the bulls that sold were better than breed average for birth weight, weaning weight, yearling weight and marbling.

DLCC Herd Trend for BW & YW EPD's



18 Breed Comparison on Feed Efficiency



Innovation & Technology

For 18 years we have collected ultrasound information on all of our cattle, fertility tested all of our bulls and utilized peer-reviewed science to help guide us towards better breeding principles. New research is helping us understand the feed efficiency advantage South Devon cattle possess.



The guiding principles of our operation have remained a balanced approach to genetics with attention on growth and carcass merit, a sincere focus on eye-appeal and udder quality, and emphasizing the effects of hybrid vigor through the production of our Poundmaker cattle. Our philosophy to cattle breeding is represented in every animal we sell.

The Power of English Heterosis

No other English breed of cattle can boast the versatility and complimentarity South Devon cattle possess. With advantages in rapid feedlot gain, feed efficiency, docility, maternal values, near-Angus marbling, and red or black hides, South Devon make the perfect match for commercial cattlemen wanting to add another breed to their crossbreeding rotation.

Breed Integrity you can trust

Few other breed organizations have valued the integrity of their cattle more than the South Devon Association. Since the early 1990's whole herd reporting has been mandatory. There is currently no known lethal genetic mutations within the breed.

“OUR MISSION IS TO PRODUCE SEEDSTOCK CATTLE THAT HELP OUR CUSTOMERS REACH THEIR GOALS, WHATEVER THEY MAY BE.” - Dar & Lynn

Utilize DLCC Genetics to Reach your Goals

Selling Calves at Weaning - In this offering we have bulls that excel in early growth. Select a bull that indicates strong growth values, particularly Weaning Weight EPD, to fully capitalize on your end-goal.

Keeping Females for Replacements - We are offering many bulls bred and designed to make females. Select a bull that is balanced through calving and growth figures, who also excels at Maternal Calving Ease and Maternal Weaning Weight EPD's. Ask us about any of our bulls pedigree and we will give you information on the dam and granddam.

Retaining Ownership of Calves through Finishing - If your goal is to capitalize on the carcass merit of the breed, select a bull who is strong in carcass EPD's such as; Ribeye Area, Carcass Weight and most of all Marbling.

Selecting for Competitive Show Cattle - Show cattle with dominate performance exemplify the business of the cattle industry. We try to annually offer cattle that will not only perform in the show ring, but more importantly perform on the ranch. This year is unlike any other year as we are offering the entire 2017 born Denver show string.

Developing a Composite Herd - The cattle in this offering offer a unique opportunity to integrate a true outcross to most composite programs. We have a whole suite of Poundmakers that will add heterosis and breed complimentarity to your program. Let us know exactly the composite program you have in mind and we can help.





LOT 1 - DLCC ENGINEER 17E

DOB: 3/7/2017	Reg #:213129	Black	P	Tattoo: DLCC17E
---------------	--------------	-------	---	-----------------

DLCC DODGE CITY 78Y

DLCC COPY CAT 69C

DLCC TOPAZ 20Y *

MMM UNTOUCHABLE W810

DLCC LOOP 19B

DLCC GRACIE 80Y *

Act BW: 83			Adj WW: 593			WW Ratio:101			Act YW:1280		
CED	BW	WW	YW	Milk	MWW	CEM	Marb	Fat	REA	CW	RB
0.7	3.7	54	103	34	61	0.8	0.3	0.01	0.35	40.4	1

Leachman \$Profit: \$19,181

Engineer goes back to DLCC Dodge City on the Paternal side and includes the extremely sought after MMM Untouchable in the maternal pedigree. Paternal brother to the 2018 Reserve National Champion female, “Loop” is one of the best cow families on our operation. He was a barn favorite in Denver because he backs that pedigree with extra power and stoutness and is a standout of the Copy Cat sons in terms of his shape and topline mass combined with balance and added eye appeal.

This complete package has been *engineered* to lead off this years’ offering.





LOT 2 - DLCC ESQUIVO 102E

DOB: 4/18/2017	Reg #:213099	BLACK	P	Tattoo: DLCC102E
----------------	--------------	-------	---	------------------

DLCC DODGE CITY 78Y

DLCC COPY CAT 69C

DLCC TOPAZ 20Y *

DLCC WHIPLASH 1Y

DLCC BECCA 44B

DLCC LADI GIRL 43R

Act BW: 72			Adj WW: 608			WW Ratio:103			Act YW:1120		
CED	BW	WW	YW	Milk	MWW	CEM	Marb	Fat	REA	CW	RB
1.1	1.5	54	94	33	60	1.6	0.6	0.01	0.23	34.8	0.7

Leachman \$Profit: \$18,474

Another younger son out of the Copy Cat sire group with an excellent spread of numbers and even better phenotype. Big middled, massive topped and sound moving, DLCC Esquivo combines the ruggedness of Copy Cat with the female making ability of Whiplash 1Y on the maternal side.



LOT 3 - DLCC ENTER PRIZE 30E

DOB:3/10/2017	Reg #:213034	RED	P			
DLCC DODGE CITY 78Y			Tattoo: DLCC30E			
DLCC COPY CAT 69C			Marb 1.1			
DLCC TOPAZ 20Y *			Fat 0.01			
DLCC SURE THING TOO 119T			REA 0.06			
MJB PERFECT 0585X			CW 24			
MJB RUBY 5711R			RB 0.4			
Act BW:77	Adj WW:493	WW Ratio:84	Act YW:1140			
CED	BW	WW	YW	Milk	MWW	CEM
2	1.3	37	75	31	50	0.9
Leachman \$Profit: \$13,482						

Eye appeal all day. Extra front, great build, and plenty of shape to go in a package that should make great females for years to come.

LOT 4 - DLCC 28E

DOB:3/10/2017	Reg #:213092	BLACK	P			
DLCC DODGE CITY 78Y			Tattoo: DLCC 28E			
DLCC COPY CAT 69C			Marb 0.7			
DLCC TOPAZ 20Y *			Fat 0.02			
DLCC CHANCE 52X			REA 0.35			
RP BLACK GOLD 50B			CW 31.1			
RP RICHES 51R			RB 0.9			
Act BW:72	Adj WW:543	WW Ratio:92	Act YW:1075			
CED	BW	WW	YW	Milk	MWW	CEM
0.7	1.8	40	80	28	48	0.6
Leachman \$Profit: \$17,354						



LOT 3

What is \$Profit?

The LCOC \$Profit index is a value associated with a bull's ability to impact a cow herd's bottom line. Every bull has strengths and weaknesses tied to certain traits, and the \$Profit combines all of the economically relevant traits into one single value.

How \$Profit Works?

\$Profit is a selection index that incorporates EPD's, performance records, and industry cost/value standards into its model. \$Profit assumes the average commercial bull will have 100 progeny over its lifetime. Additionally, the model states that 30% of your heifers will be retained as replacements, while the remainder you retain ownership of through finishing and sell on the grid.

The model then factors in all of the income and expense effects to come up with a net profit figure for each bull. In a comparison sense, say you purchased a \$10,000 \$Profit bull compared to a \$6,000 \$Profit bull (the average 2008 born Angus bull). The predicted lifetime value associated with that bull is \$4,000 over the average bull. You would be making an extra \$40 per calf sired by that bull.

What is included in \$Profit?

Economically Relevant Traits

Calving Ease Direct
Weaning & Yearling Weight EPD's
Fertility
Carcass Weight
Marbling
Ribeye Area
% Retail Product

Cost Traits

Cow Mature Size
Cow Intake
Feedlot Feed Efficiency

Why we use \$Profit

\$Profit is one of the best indicators to evaluate the genetic merit of balanced genetics in the industry today. We understand the need to develop seedstock cattle that benefit the entire supply chain, from birth to slaughter. We have a great relationship with the Leachman Cattle of Colorado system and are proud to be cooperators. \$Profit not only helps us continually breed better cattle, it also helps you reach your goals.

Find us on sale day for any questions you may have regarding \$Profit



LOT 5 - DLCC STOCKMAN 13E

DOB: 3/6/2017	Reg #:213079	BLACK	P	Tattoo:DLCC 13E
---------------	--------------	-------	---	-----------------

MMM UNTOUCHABLE W810

DLCC STOCKMAN 39C

DLCC PROMISE 40U

DLCC SURE THING 34P

DLCC TEA CUP 113U *

DLCC PRECIOUS 66P

Act BW: 74			Adj WW: 645			WW Ratio:109			Act YW:1145		
CED	BW	WW	YW	Milk	MWW	CEM	Marb	Fat	REA	CW	RB
1.6	1.6	62	113	30	61	1	0.9	0	0.32	45.6	1

Leachman \$Profit: \$20,684

Out of the highest selling bull DLCC ranch has seen through their sale in recent years, DLCC Stockman 39C, his son 13E has all the basics of structure and volume, yet adds that extra step. Extra stoutness of structure, extra length of body, extra volume, extra rib and hip shape, extra look and design. All the extra's in his phenotype it's almost not fair to mention his pedigree, and a \$Profit value north of 20 thousand. Don't miss out on one of the few purebred Stockman 39C sons that will ever sell.





LOT 6 - DLCC EXCALIBUR 76E

DOB: 4/3/2017	Reg #:213115	BLACK	P	Tattoo: DLCC76E
---------------	--------------	-------	---	-----------------

TLC MACRAE 945X

DLCC MANHATTAN 33Z

DLCC CALIFORNIA GIRL 92X *

DLCC SURE THING TOO 119T

DLCC BINDI 71X

DLCC KATARINA 147K

Act BW: 74			Adj WW: 672			WW Ratio:114			Act YW:1165		
CED	BW	WW	YW	Milk	MWW	CEM	Marb	Fat	REA	CW	RB
1.3	1.6	59	98	31	61	1.1	0.6	-0.01	0.07	36.6	0.7

Leachman \$Profit: \$20,451

We changed the pedigree but not the kind. The leadoff son of Manhattan keeps you in the upper echelon of dollar profit and keeps you confident in purchasing a stout rugged herd bull that has extra pieces of eye appeal and fleshing ease. His mother goes back to the ever-stylish, ever-correct Sure Thing Too 119T. She is likely the most attractive cow on our place with an excellent udder and has raised multiple high selling bulls in our past sales.

Don't miss this rugged potential herdsire.



LOT 7 - DLCC EQUINOX 74E

DOB:4/3/2017	Reg #:213023	BLACK	P
TLC MACRAE 945X			Tattoo: DLCC74E
DLCC MANHATTAN 33Z			Marb 0.6
DLCC CALIFORNIA GIRL 92X *			Fat 0.01
DLCC WHIPLASH 1Y			REA 0.15
DLCC MISS MIA 4A			CW 34.2
DLCC MAMA MIA 12Y			RB 0.6
Act BW:83	Adj WW:614	WW Ratio:104	Act YW:1095
CED	BW	WW	YW
0.3	3	53	96
Milk	MWW	CEM	
32	58	0.4	
Leachman \$Profit: \$18,311			

LOT 8 - DLCC ETCH 71E

DOB:4/2/2017	Reg #:213059	BLACK	P
TLC MACRAE 945X			Tattoo: DLCC 71E
DLCC MANHATTAN 33Z			Marb 0.4
DLCC CALIFORNIA GIRL 92X *			Fat 0.01
DLCC COMMERCIAL DAM 194X			REA 0.21
			CW 30.3
			RB 0.7
Act BW:81	Adj WW:641	WW Ratio:109	Act YW:1190
CED	BW	WW	YW
0.1	2.5	51	91
Milk	MWW	CEM	
30	56	0.1	
Leachman \$Profit: \$18,297			

Moderate birth with an outstanding weaning weight ratio of 109.

LOT 9 - DLCC ENERGIZER 87E

DOB:4/9/2017	Reg #:213025	RED	P
TLC MACRAE 945X			Tattoo: DLCC87E
DLCC MANHATTAN 33Z			Marb 0.6
DLCC CALIFORNIA GIRL 92X *			Fat 0.01
DLC MR ROCK 41W			REA 0.25
DLCC POPPY 108Z			CW 23.7
DLCC DANCER 38P			RB 0.7
Act BW:80	Adj WW:519	WW Ratio:88	Act YW:1044
CED	BW	WW	YW
1.3	2.1	33	68
Milk	MWW	CEM	
31	47	0	
Leachman \$Profit: \$17,482			

Out of Poppy 108Z, one of our favorite show heifers and easiest-fleshing cows.



DAM OF LOT 6

LOT 10 -DLCC EPCOT 98E

DOB:4/13/2017	Reg #:213067	BLACK	P
TLC MACRAE 945X			Tattoo: DLCC 98E
DLCC MANHATTAN 33Z			Marb 0.4
DLCC CALIFORNIA GIRL 92X *			Fat 0.01
DLCC RANCHHAND 31R			REA 0.24
DLCC FELICIA 86Y			CW 25.9
DLCC LADI GIRL 43R			RB 0.8
Act BW:76	Adj WW:554	WW Ratio:94	Act YW:1095
CED	BW	WW	YW
-0.5	1.7	40	77
Milk	MWW	CEM	
33	53	1.2	
Leachman \$Profit: \$15,280			

It was difficult to decide which of the Manhattan sons to picture as they are all consistent in their type. 98E made the cut with his extra extension and eye appeal, combined with the stoutness and volume.



LOT 10





LOT 11 - DLCC EFFORTLESS 2E

DOB: 3/24/2017	Reg #:212438	RED	P	Tattoo: MDE2
----------------	--------------	-----	---	--------------

DLCC DODGE CITY 78Y
DLCC COWBOY JO 81C
 DLCC KATARINA 67Z
 SBCC ZEUS 2145
KNN STRAWBERRY 38C
 KNN STRAWBERRY 8Y

Act BW: 71			Adj WW: 760			WW Ratio:100			Act YW:1120		
CED	BW	WW	YW	Milk	MWW	CEM	Marb	Fat	REA	CW	RB
0.6	3.1	44	85	25	46	0.9	0.7	0.03	0.28	28	0.5

Leachman \$Profit: \$11,044

From day one 2E got us excited. His pedigree reads calving ease and with a 71 pound actual birth we won't argue. He strikes us as a design bull, perfect for making females or show cattle with extra look. But he definitely does not disappoint in the stoutness and power categories either. He catches your attention from a distance and gets you excited up close as a sire with the right combination of look and bull power.





LOT 12 - DLCC EMCEE SQUARED 1E

DOB: 3/19/2017	Reg #:212439	RED	P	Tattoo: MDE1
----------------	--------------	-----	---	--------------

DLCC DODGE CITY 78Y
DLCC COWBOY JO 81C
 DLCC KATARINA 67Z
 KNN WALKER 2A
KNN KIM 23C
 KNN KIZA 3Z

Act BW: 46			Adj WW: 794			WW Ratio:100			Act YW:1040		
CED	BW	WW	YW	Milk	MWW	CEM	Marb	Fat	REA	CW	RB
3.7	-1	31	65	27	42	2.2	0.7	0.03	0.25	23.7	0.5

Leachman \$Profit: \$12,097

The more moderate, thicker alternative to his half sib in lot 11. A 46 pound actual birth and the highest adjusted weaning weight of the Cowboy Jo's at 794. If you want a calving ease sire that still has some grow and feedability, look into the big middled 1E for his ability to generate easy keeping fault free progeny.





LOT 13 - JP EARL 21E

DOB: 3/13/2017	Reg #:212511	RED	P	Tattoo: JP21E
----------------	--------------	-----	---	---------------

DLCC DODGE CITY 78Y
DLCC COWBOY JO 81C
 DLCC KATARINA 67Z
 HS E PLURBIS UNUM
JP CALLIE 54C
 JP25Z *

Act BW: 88			Adj WW: 587			WW Ratio:105			Act YW:1125		
CED	BW	WW	YW	Milk	MWW	CEM	Marb	Fat	REA	CW	RB
1.6	0.9	42	80	28	49	0.6	1	0.04	0.27	27.3	0.4

Leachman \$Profit: N/A

We won't say you are wrong if you call us out for having the best Cowboy Jo son selling third. Another combination bull that packs an extra shot of power and rib into a calving ease pedigree. The difference in 21E is that he does this in an elite package of balance and eye appeal. His sire was never pictured but believe us when we say his sons sell themselves. **Consigned by Joel Popken.**



LOT 14 - DLCC ELDORADO 26E

DOB:3/10/2017	Reg #:213038	RED	P			
DLCC DODGE CITY 78Y			Tattoo: DLCC26E			
DLCC COWBOY JO 81C			Marb 1			
DLCC KATARINA 67Z			Fat 0.02			
DLC ROYAL LAD 1139			REA 0.08			
DLCC PERFECT 9A *			CW 34.5			
MJB PERFECT 0585X			RB 0.3			
Act BW:73	Adj WW:684	WW Ratio:116	Act YW:1205			
CED	BW	WW	YW	Milk	MWW	CEM
3.7	0.1	56	103	35	63	1.6
Leachman \$Profit: \$16,825						

A WW ratio of 116 and his mother goes back to DLC Royal Lad 1139. Low birth and high growth, he is one of the best spread bulls in the sale.

LOT 15 - DLCC ELIOT 51E

DOB:3/15/2017	Reg #:213135	BLACK	P			
DLCC DODGE CITY 78Y			Tattoo: DLCC51E			
DLCC COWBOY JO 81C			Marb 1.3			
DLCC KATARINA 67Z			Fat 0.03			
DLCC SURE THING 34P			REA 0.36			
DLCC SIERRA 82S			CW 43.7			
MJB NATALIE 4565P *			RB 0.6			
Act BW:82	Adj WW:678	WW Ratio:115	Act YW:1020			
CED	BW	WW	YW	Milk	MWW	CEM
0.9	3	61	115	31	62	1.3
Leachman \$Profit: \$15,394						

A WW ratio of 115. These Cowboy Jo's can grow too.

LOT 16 - DLCC ELIAS 45E

DOB:3/12/2017	Reg #:213102	RED	P			
DLCC DODGE CITY 78Y			Tattoo: DLCC 45E			
DLCC COWBOY JO 81C			Marb 0.9			
DLCC KATARINA 67Z			Fat 0.04			
DLCC POLLED PRO 111H			REA 0.38			
DLCC HARMONY 59T *			CW 30.4			
BIEBER HARMONY 45M			RB 0.6			
Act BW:69	Adj WW:589	WW Ratio:100	Act YW:1120			
CED	BW	WW	YW	Milk	MWW	CEM
3.2	0.3	38	82	33	52	0.3
Leachman \$Profit: \$13,811						

The thickest ended of the Cowboy Jo's. 45E has one of the biggest ribs and strikes with a functional look that indicates he will add power and stoutness to the next generation.



TESTIMONIALS

Our Customers Share their Success

“The bulls I purchased from DLCC last year have adapted to our rugged and arid terrain amazingly well! Their gentle nature is also very good for our cattle as most of our cow herd has a bit of ear. Our concerns have been laid to rest as the bulls appear to be as tough and ready for work as possible. I would recommend them for any ranch in the southwest.”

— Jeff Menges, AZ

“Dodge City 78Y is the big spread, high \$Profit bull in the South Devon breed! He has emerged in the NASDA database as one of the easiest Calving Ease sires in the breed. Based on this proof, Leachman Cattle of Colorado purchased Dodge City and five of his sons from DLCC Ranch”

— Lee Leachman, CO



Formula Calculations
Raty Ranch Heifers

Lot Information		Schedule of Premiums & Discounts	
Producer	HENSEL FAH	Prime/Select Spread	\$38.02
Race	Heifers	Choice/Select Spread	\$30.02
Lot Number	508	Yield Grade 1's	\$0.00
Pen Number	10	Yield Grade 2's	\$1.50
Kill Date	8/23/2017	Yield Grade 3's	\$0.00
Head Count	180	Yield Grade 4's & 5's	(\$10.00)
Condemned Cattle	0	Standard	(\$39.00)
Carcass Marking Price		Dark Cutters	(\$45.00)
		Light Weights	(\$45.00)
		Over Weights	(\$10.00)
		Commercials	(\$45.00)

Category	Plant Average	Formula Cattle	Variance	Price Standards	or Plant Avg MONEY
% Prime	3.58%	4.74%	1.16%	\$38.02	\$0.42
% Choice	72.86%	82.11%	18.25%	\$30.02	\$5.77
% Select	18.93%	3.16%	-15.77%	\$0.00	\$0.00
% Standard	2.43%	0.00%	-2.43%	(\$38.02)	\$0.85
% Commercial	1.50%	0.00%	-1.50%	(\$45.00)	\$0.88
% Yield Grade 1	8.05%	0.00%	-8.05%	\$0.00	(\$0.17)
% Yield Grade 2	35.76%	15.79%	-18.06%	\$1.50	(\$0.30)
% Yield Grade 3	50.79%	87.37%	18.58%	\$0.00	\$0.00
% Yield Grade 4 & 5	7.38%	18.32%	8.94%	(\$10.00)	(\$0.99)
% Dark Cutters	0.98%	0.00%	-0.98%	(\$45.00)	\$0.91
% Light Weights	0.20%	0.00%	-0.20%	(\$45.00)	\$0.59
% CAB	18.95%	52.11%	33.16%	\$2.00	\$0.66
% Heavy Weights >1000	1.80%	0.00%	-1.80%	(\$10.00)	\$0.15
Plant Average					\$7.37

Pricing Information		Summary of Premiums & Discounts	
Number of Cattle	180	Quality Grade Premium	\$7.37
Avg. Live Weight	1163	Yield Grade Premium	\$0.00
Dressing Percent	82.85%	Quality Grade Discount	\$0.00
Avg. Carcass Weight	728	Yield Grade Discount	(\$1.36)
Total Live Pounds	209852	Weight Premium	\$1.22
Total Carcass Pounds	136389	Weight Discount	\$0.00
Dressed Cost		Low Price	\$235.00
Live Cost		High Price	\$246.00
Final Dollars		Slating Price	\$210.00
Over 30 Months \$100 per head	\$0.00	Plant Price	\$217.57
Total check amount		Prem. or Discount/head	\$7.87
		Prem. or Discount/head	\$58.17

9 prime 23 9-1 CAB 99
175 choice 49 2-30
6 select 49 3-128
40 4-1

“The first bull I ever purchased from Dar broke his penis and I had never worked with a producer with a guarantee like theirs. The guarantee is exactly what they say it is, and I even offered to go 50/50 on the bull and instead recieved 100% back, no questions asked. The fertility, longevity, and disposition has greatly been improved in my cowherd and the calves are still sensible on carcass merit. Last year the group of calves I sold made an extra \$55 per head compared to the plant average, and feedlots have been very satisfied with the calves uniformity, feed conversion and disposition. The most important fact is that DLCC is a family owned operation that stands behind their cattle and takes care of their customers.”

- Keith Raty, MT





LOT 17 - DLCC MR. BRIGHTSIDE 92E

DOB: 4/11/2017	Reg #:213112	BLACK	P	Tattoo:DLCC92E
----------------	--------------	-------	---	----------------

SBCC WOMANIZER 9137
DLCC DODGE CITY 78Y
 DLCC PERFECT ENUF 28W
 DLCC SHUR LOC 99W
DLCC RIBBONS 69A
 DLCC RIBBONS 4T

Act BW: 75			Adj WW: 611			WW Ratio:104			Act YW:1215		
CED	BW	WW	YW	Milk	MWW	CEM	Marb	Fat	REA	CW	RB
1.3	1.7	53	101	26	53	0.2	1.3	0.01	0.23	38.9	0.6

Leachman \$Profit: \$17,329



We have the conversation every year about which sire we will shine the light on, we usually come to the same conclusion... "IF IT AIN'T BROKE DON'T FIX IT." Dodge City consistently sires the calves we find first in the pen because they are the ones that combine the look we are after with structural correctness and all have the extra power and shape to boot. 92E has the look of an elite show bull and the basics of a better herd bull, we don't care what you do with him, just don't miss him. We will be collecting semen on him before spring turnout.





LOT 18 - DLCC WITH WHO 6E

DOB: 2/28/2017	Reg #:213044	RED	P	Tattoo: DLCC 6E
----------------	--------------	-----	---	-----------------

SBCC WOMANIZER 9137
DLCC DODGE CITY 78Y
 DLCC PERFECT ENUF 28W
 DLCC SHUR LOC 99W
DLCC MY MARIA 107B
 DLCC MY MARIA 93L

Act BW: 73			Adj WW: 528			WW Ratio:90			Act YW:1250		
CED	BW	WW	YW	Milk	MWW	CEM	Marb	Fat	REA	CW	RB
1.8	1.3	38	76	24	43	0.8	1	0.01	0.14	26.4	0.4

Leachman \$Profit: \$11,600



Lets talk stoutness, you pick the end to start on. Big top, rugged structure and big square feet. If you saw a feed yard of steers that had that flesh and shape, your first thought would be that someone is making money. With a mother out of the legendary Shur Loc 99W, he has a proven pedigree and an obvious phenotypic advantages.



LOT 19 - DLCC DODGE 114E

DOB:5/12/2017	Reg #:213022	RED	P			
SBCC WOMANIZER 9137			Tattoo: DLCC114E			
DLCC DODGE CITY 78Y			Marb 1			
DLCC PERFECT ENUF 28W			Fat 0.01			
DLCC SHUR LOC 99W			REA 0.28			
DLCC MAMA MIA 12Y			CW 40.8			
DLCC PRINCESS MIA 78P *			RB 0.7			
Act BW:79	Adj WW:638	WW Ratio:108	Act YW:1215			
CED	BW	WW	YW	Milk	MWW	CEM
0.8	2.4	60	109	28	58	0.1
Leachman \$Profit: \$17,732						

Look at the actual spread, an actual birth weight of 79 pounds, weaning weight of 638 and a yearling of 1215. His actual performance matches his EPD profile.

LOT 21 - DLCC QUANTAS 59E

DOB:3/18/2017	Reg #:213085	RED	P			
GUM HILL B41			Tattoo: DLCC59E			
GUM HILL RED 530			Marb -0.1			
GUM HILL Y046			Fat 0			
DLC MR ROCK 41W			REA 0.31			
DLCC TOPAZ 20Y *			CW 36.6			
DLCC CLARE 73U			RB 1.1			
Act BW:82	Adj WW:680	WW Ratio:115	Act YW:1060			
CED	BW	WW	YW	Milk	MWW	CEM
-1.4	4.3	54	101	31	58	0.2
Leachman \$Profit: \$16,355						

He is a maternal half-brother to DLCC Copy Cat 69C, DLCC Battlecry 27B, and DLCC Derby 64D. His mother has a \$Profit of \$20,868

LOT 23 - DLCC ETHAN 58E

DOB:3/18/2017	Reg #:213032	RED	P			
GUM HILL B41			Tattoo: DLCC58E			
GUM HILL RED 530			Marb 0.5			
GUM HILL Y046			Fat 0.01			
DLCC SURE-ENUF			REA 0.28			
MJB SASSY 9518W			CW 40.8			
MJB TREASURE 7769T			RB 0.9			
Act BW:87	Adj WW:686	WW Ratio:116	Act YW:1326			
CED	BW	WW	YW	Milk	MWW	CEM
-1.3	4.6	58	108	23	52	0.3
Leachman \$Profit: \$12,888						

LOT 20 - DLCC DURANGO 120E

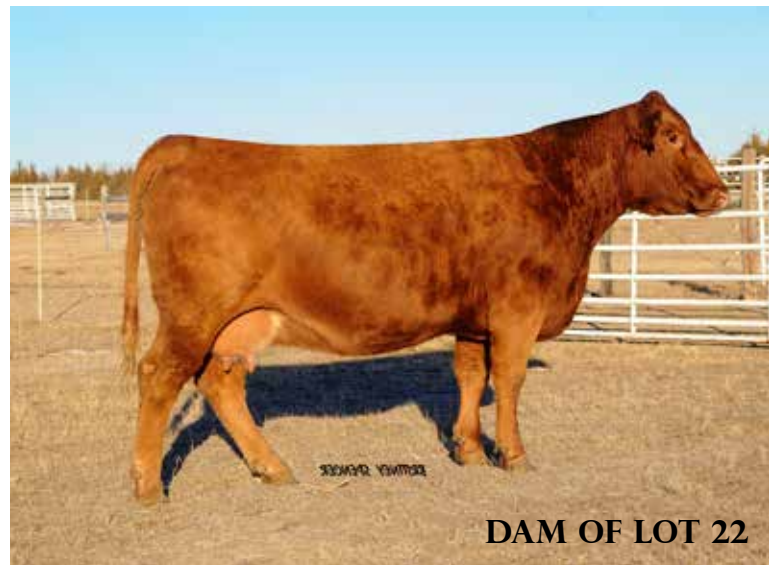
DOB:5/21/2017	Reg #:213072	BLACK	P			
DLCC SHUR LOC 99W			Tattoo: DLCC120E			
DLCC DURANGO 26Z			Marb 0.5			
DLCC MANDI 55U *			Fat 0.01			
MJB LEGEND 338X			REA 0.18			
DLC MS LEGEND 530			CW 32.8			
DLC ROCKETTE 803U			RB 0.8			
Act BW:71	Adj WW:640	WW Ratio:112	Act YW:1005			
CED	BW	WW	YW	Milk	MWW	CEM
1.3	1.9	55	95	30	58	1.3
Leachman \$Profit: \$18,992						

The only purebred Durango to sell, but one heck of a good one. His mother is the dam of one of the highest used South Devon sires ever, DLC Royal Lad 1139

LOT 22 - DLCC ENCORE 19E

DOB:3/8/2017	Reg #:213029	RED	P			
GUM HILL B41			Tattoo: DLCC19E			
GUM HILL RED 530			Marb 0.2			
GUM HILL Y046			Fat 0			
DLCC POLLED PRO 111H			REA 0.35			
DLCC PRINCESS MIA 78P *			CW 40.5			
DLCC POPEYE 170K *			RB 1.2			
Act BW:93	Adj WW:686	WW Ratio:116	Act YW:984			
CED	BW	WW	YW	Milk	MWW	CEM
-1.9	5.7	57	106	29	57	-0.8
Leachman \$Profit: \$13,601						

An outcross bull, Encore is a Gum Hill out of our donor cow Princess Mia.



DAM OF LOT 22



LOT 24 - DLCC EMPIRE 40E

DOB: 3/11/2017	Reg #:213042	BLACK	P	Tattoo: DLCC40E
----------------	--------------	-------	---	-----------------

DLCC ASTOUND 48S
MMM UNTOUCHABLE W810
 BRANDY CREEK 68J *
 DLCC SURE THING TOO 119T
DLCC FANCY PANTS 103Y
 DLCC BLACK BUTTON 27M

Act BW: 63			Adj WW: 531			WW Ratio:90			Act YW:1185		
CED	BW	WW	YW	Milk	MWW	CEM	Marb	Fat	REA	CW	RB
4.2	-1.3	38	69	26	45	2	0.5	0	0.12	25.7	0.7

Leachman \$Profit: \$15,174

Of the two MMM Untouchable sons to sell we chose to lead with the extra look, design and superior calving ease. The more youthful of the pair, he is ideal in his hip and hind leg design and works plenty of shape from there forward. Half sib to the popular Stockman 39C and extra dollar profit 40E is built and bred to start your own Empire.





LOT 25 - DLCC EMMET 14E

DOB: 3/6/2017	Reg #:213110	BLACK	P	Tattoo:DLCC14E
---------------	--------------	-------	---	----------------

DLCC ASTOUND 48S

MMM UNTOUCHABLE W810

BRANDY CREEK 68J *

DLCC WHIPLASH 1Y

DLCC PRECIOUS 47B

DLCC PRECIOUS 113M *

Act BW: 78			Adj WW: 584			WW Ratio:99			Act YW:1140		
CED	BW	WW	YW	Milk	MWW	CEM	Marb	Fat	REA	CW	RB
1.8	2.1	47	90	31	54	1.6	0.1	0.02	0.25	33.8	0.7

Leachman \$Profit: \$15,081

Last chance at a purebred bull and we are completely confident that a person could invert the sale order and start with 14E. The commercial cattleman's kind, stout, rugged skeleton with huge feet and square toes. It's not surprising that he is able to put that much power and fleshing ability on a foundation like he has. Enough carcass in his pedigree and he goes back to Whiplash 1Y, who has made a name for himself of making females.

Don't miss out on your one-stop to look like a genius.





LOT 26 - DLCC EVEREST 50E

DOB: 3/14/2017	Reg #:213082	BLACK	P	Tattoo: DLCC50E
----------------	--------------	-------	---	-----------------

MMM UNTOUCHABLE W810

DLCC STOCKMAN 39C

DLCC PROMISE 40U

DLCC WHIPLASH 1Y

DLCC BELLE 17B

T M L LADY 60K

Act BW: 69			Adj WW: 649			WW Ratio:110			Act YW:1305		
CED	BW	WW	YW	Milk	MWW	CEM	Marb	Fat	REA	CW	RB
2.7	0	62	111	27	58	1.8	1	0.01	0.19	44.6	0.6

Leachman \$Profit: \$21,632

SELLING HALF INTEREST:
Half Possession & Half Semen Interest

When we think of the next generation of South Devon cattle, this is what we have in mind. Our sale offering is full of bulls that work for everyone, but there is one bull that can do it all with all the power, eye-appeal, and data profile that can change this industry. He has all the intangibles; solid feet, a quiet disposition, a long stride, a young and productive dam, and the look that should capture the attention of every single bull stud. Yes, we think he is that good.

Checking boxes? Oh yeah, his data profile is OFF THE CHARTS, and a Leachman \$Profit value that ranks among the top 0.1%. Everest 50E is a mountain of a bull that combines all of the things that make for a truly elite animal.





LOT 27 - DLCC STOCKMAN 42E

DOB: 3/12/2017	Reg #:213128	RED	P	Tattoo: DLCC42E
----------------	--------------	-----	---	-----------------

MMM UNTOUCHABLE W810

DLCC STOCKMAN 39C

DLCC PROMISE 40U

DLCC LEGEND 145T

MJB LEGEND 0546X

MJB EMPRESS 7528T

Act BW: 75			Adj WW: 662			WW Ratio:112			Act YW:1064		
CED	BW	WW	YW	Milk	MWW	CEM	Marb	Fat	REA	CW	RB
0.9	2.2	64	113	34	66	0.8	0.8	0	0.22	45.8	0.9

Leachman \$Profit: \$20,415

If you've been paying attention, there are three Stockman calves in the sale. The average \$Profit of those three is \$20,910, and if you average the entire group of calves sired by Stockman born in 2017 the average \$Profit is \$19,600. Best sire group in the sale? We think so, and this is your last chance to get your hands on such an outstanding pedigree. Give up some pounds and a bit of middle to his half-brother in lot 26, but beyond the color difference, a person could take the same steps forward in their operation by using 42E.





LOT 28 - DLCC RAGNAROK 10E

DOB: 3/2/2017	Reg #:213045	BLACK	P	Tattoo:DLCC 10E
---------------	--------------	-------	---	-----------------

SBCC WOMANIZER 9137
DLCC DODGE CITY 78Y
 DLCC PERFECT ENUF 28W
 LEACHMAN TESTIFY D003Z
DLCC BABY DOLL 22B
 DLCC RED BUTTON 50Z *

Act BW: 80			Adj WW: 670			WW Ratio:114			Act YW:1387		
CED	BW	WW	YW	Milk	MWW	CEM	Marb	Fat	REA	CW	RB
1.3	1.8	64	112	29	61	0.5	1.2	0.01	0.19	39.2	

Leachman \$Profit: \$16,142

Living breathing proof of what South Devon Genetics can do in a crossbreeding program. DLCC Dodge City strikes again with one of the most powerful, biggest-bodied bulls in the offering. Built with the rugged structure to handle country and breed cows. Who wouldn't want to add extra pounds in a phenotype like this to their calf crop? We will collect semen on him before spring turnout.



LOT 29 - DLCC EASY STREET 53E

DOB:3/15/2017	Reg #:213035	BLACK	P
DLCC DODGE CITY 78Y			Tattoo: DLCC53E
DLCC COPY CAT 69C			Marb 1.4
DLCC TOPAZ 20Y *			Fat 0.03
DLCC MUCH WISER 30Z			REA 0.25
DLCC BISCUIT 69B			CW 36.3
DLCC BISCUIT 104X *			RB 0.4
Act BW:85	Adj WW:649	WW Ratio:110	Act YW:1155
CED	BW	WW	YW
-0.4	3.9	61	115
Milk	MWW	CEM	
33	64	0.8	
Leachman \$Profit: \$16,283			

Great balance and a front third made for taking pictures. Copy Cat Poundmakers will add pounds power and \$Profit to subsequent calf crops.



LOT 29

LOT 30 - DLCC ELI 39E

DOB:3/11/2017	Reg #:213094	BLACK	P
DLCC DODGE CITY 78Y			Tattoo: DLCC 39E
DLCC COPY CAT 69C			Marb 0.7
DLCC TOPAZ 20Y *			Fat 0.01
RATY MULTIPLE SIRE GROUP 1			REA 0.24
RR MONTANA TREASURE 151B			CW 21.4
RATY 151 DAM			RB 0.7
Act BW:68	Adj WW:554	WW Ratio:94	Act YW:1055
CED	BW	WW	YW
1.9	0.2	36	69
Milk	MWW	CEM	
29	47	0.7	
Leachman \$Profit: \$15,219			

LOT 31 - DLCC ESCAPADE 100E

DOB:4/16/2017	Reg #:213098	RED	P
DLCC DODGE CITY 78Y			Tattoo: DLCC100E
DLCC COPY CAT 69C			Marb 0.9
DLCC TOPAZ 20Y *			Fat 0.01
MAPLE LEAF LANDSLIDE			REA 0.13
DLCC BLACK LACY 17N			CW 28.5
DLCC BLACK LADY 06K			RB 0.7
Act BW:91	Adj WW:568	WW Ratio:96	Act YW:1045
CED	BW	WW	YW
-1.6	4.6	53	91
Milk	MWW	CEM	
28	54	-0.1	
Leachman \$Profit: \$14,271			

Escapade 100E combines old with the new, a Copy Cat son out of a Maple Leaf Landslide cow. Proof that historical pedigrees still produce great calves.





LOT 32 - DLCC MONTANA ENDEAVOR E14

DOB: 3/23/2017	Reg #:212669	RED	P	Tattoo: E14
----------------	--------------	-----	---	-------------

DLCC PATRIOT 51Y
DLCC BATTLECRY 27B
 DLCC TOPAZ 20Y *

CCN RED ANGUS DAM X7

Act BW: 83			Adj WW:			WW Ratio:			Act YW:1175		
CED	BW	WW	YW	Milk	MWW	CEM	Marb	Fat	REA	CW	RB
0.9	0.7	36	66	27	45	0.7	0.5	0.01	0.22	23.2	0.8

Leachman \$Profit: N/A

More evidence of South Devon genetics benefitting the cattle industry in cross-breeding systems. To save you time drawing a structurally correct example of a bull, we took a picture of one. Elite balance, great look and he moves like a bull is supposed to. E14 stems from a commercial herd that is required to cover rough terrain and function with limited intervention. You can trust both his pedigree and phenotype to be low maintenance while adding pounds to calves with hybrid vigor.



DLCC Robin Hood 10Z - Sire of Lots 33,34,35



LOT 33 - DLCC MONTANA EMORY E39

DOB:3/28/2017	Reg #:212664	RED	P
DLCC SHUR LOC 99W			Tattoo: E39
DLCC ROBIN HOOD 10Z			Marb 0.7
MJB SASSY 7532T *			Fat 0.02
CCN RED ANGUS DA Y174			REA 0.18
			CW 27.2
			RB 0.6
Act BW:83	Adj WW:	WW Ratio:	Act YW:1305
CED	BW	WW	YW
0.9	0.7	43	81
Milk	MWW	CEM	
21	42	1.2	
Leachman \$Profit: N/A			

LOT 34 - DLCC MONTANA EZRA E3

DOB:3/20/2017	Reg #:212668	RED	P
DLCC SHUR LOC 99W			Tattoo: E3
DLCC ROBIN HOOD 10Z			Marb 0.7
MJB SASSY 7532T *			Fat 0.01
CCN RED ANGUS DAM T38			REA 0.2
			CW 27.5
			RB 0.6
Act BW:84	Adj WW:	WW Ratio:	Act YW:1280
CED	BW	WW	YW
0.8	0.8	43	81
Milk	MWW	CEM	
20	41	1.2	
Leachman \$Profit: N/A			

E3 is just a stout rugged herd bull built to breed cows and add pounds. Have confidence in the length of body and shape from end to end.

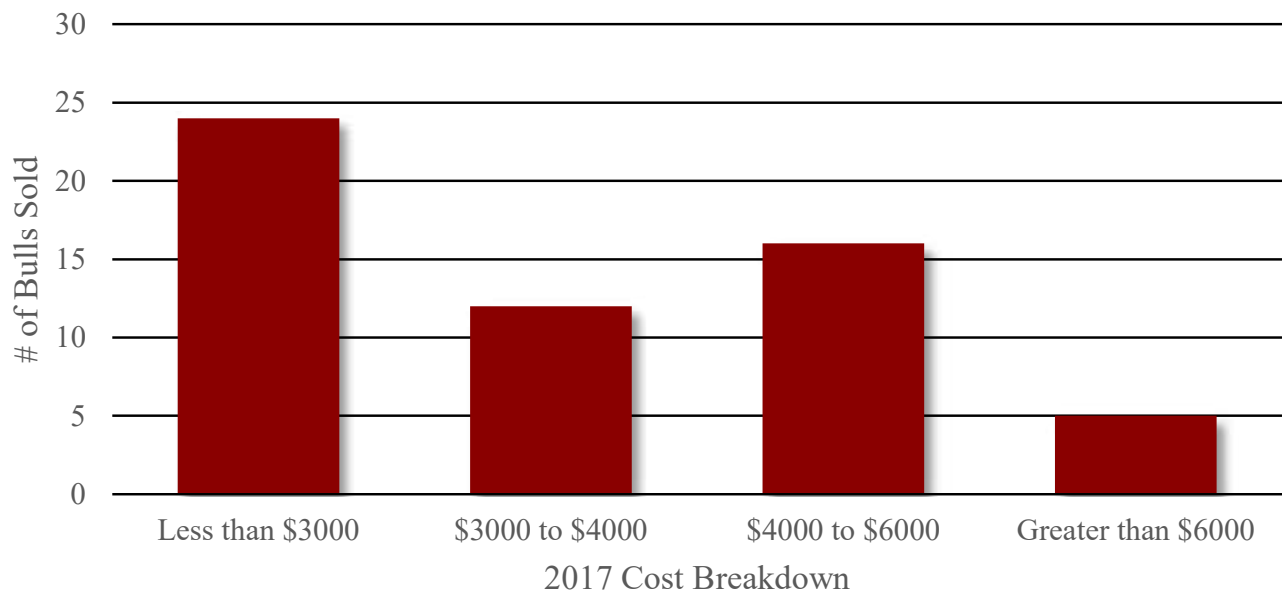


LOT 34

LOT 35 - DLCC MONTANA ERNIE E6

DOB	Reg #:212661	RED	P
DLCC SHUR LOC 99W			Tattoo: E6
DLCC ROBIN HOOD 10Z			Marb
MJB SASSY 7532T *			Fat
CCN RED ANGUS DAM A48			REA
			CW
			RB
Act BW:	Adj WW:	WW Ratio:	Act YW:1370
CED	BW	WW	YW
Milk	MWW	CEM	
Leachman \$Profit: N/A			

DLCC HAS A PRICE POINT FOR EVERY BUYER



DLCC CUSTOMER SERVICE

“You Buy, We Provide”

Delivery

Free nationwide delivery is a rare thing in this business.

If you qualify, we will deliver your bulls free of charge anywhere in the country. Only **one** of the following must be met.

A purchase of 3 or more bulls

A purchase total in excess of \$5000

You are within 400 miles of our location

We can put together a group of cattle with a common destination

Please inform us of the date you would like your cattle delivered so we can plan our deliveries accordingly. As many of you know the big limiting factor here is time, and we may not be able to get every animal delivered to their new owner by the desired date. If that is the case, we will assist you in finding transportation.

Delivery fees will never exceed the actual at-cost to deliver. Deliveries will be prioritized by volume purchased and necessity.

Bull Salvage Credit

Have an old bull that needs to go?

Bring him to us and we will offer you a sale credit that equals market price plus an additional \$250 credit. For example, if you bring us a bull weighing 1900 pounds and we receive \$0.76 a pound, you will get a credit of \$1694 in our next sale for the purchase of another bull. The credit will be awarded after the bull has been salvaged, so please notify us if you want to capitalize on this opportunity at least two weeks before the spring sale. If you are within 100 miles of our location we will even pick up the bull.

Genetic & Herd Consulting

Want some assistance with your breeding program?

We have over 30 years of experience raising cattle and a geneticist on staff in the family. Our knowledge and experience can help you develop rotational breeding, terminal crossing, and composite breeding programs that will help you maximize heterosis and breed complementarity. We can help you build a database, keep track of pedigree and performance information, and develop an AI protocol.

We will also travel to your operation and lend our expertise in cattle selection, and understanding of performance data and visual appraisal to help with the selection of your replacement females.

Sales & Marketing Assistance

Want to top the market when you sell your calves around weaning?

We've got dedicated buyers for our program that want your calves out of our bulls. We help our customers determine when the best time to sell is, along with also representing them on sale day. We will inform our buyers of the time and place where your calves auction will be held, or get in touch with you to sell directly. We only ask a couple requirements.

All calves are BRD vaccinated

All steer calves are hand-cut

All calves are in a consistent weight range

Have been weaned for at least 30 days

If your calves are out of our bulls and meet these requirements we can help you top the market on sale day.



LOT 36 - DLCC ESCORT 67E

DOB: 4/1/2017	Reg #:213074	RED	P	Tattoo: DLCC 67E
---------------	--------------	-----	---	------------------

DLCC SHUR LOC 99W

DLCC TWO STEP 84B

DLCC DANCER 141T *

RATY MULTIPLE SIRE GROUP 1

RR MONTANA TREASURE 155B

RATY 155 DAM

Act BW: 89			Adj WW: 614			WW Ratio:104			Act YW:1225		
CED	BW	WW	YW	Milk	MWW	CEM	Marb	Fat	REA	CW	RB
-1.5	4.6	49	91	25	49	1	-0.5	0	0.27	35.3	1.2

Leachman \$Profit: \$12,101



The Champion Poundmaker bull at the National Western Stock show in 2018 is for sale. 67E has unreal shape up high and through his hip, all the while maintaining his structure such that he reaches and fills with the best of them. He has the look and balance to continue in the showing and definitely has the pieces to make your calves the stoutest at weaning. Not to mention his sire is a Two-Time National Champion Bull that consistently makes the most productive females. If you still want to retain some “cow” in your cowherd, Escort 67E will do it.



LOT 37 - DLCC DURANGO 118E

DOB:5/15/2017	Reg #:213071	BLACK	P
DLCC SHUR LOC 99W			Tattoo: DLCC118E
DLCC DURANGO 26Z			Marb 0.3
DLCC MANDI 55U *			Fat 0.01
DLCC RED ANGUS			REA 0.23
			CW 42.2
			RB 0.9
Act BW:81	Adj WW:698	WW Ratio:118	Act YW:1170
CED	BW	WW	YW
0.7	2.4	62	104
Milk	MWW	CEM	
25	56	1.2	
Leachman \$Profit: \$12,693			

LOT 38 - DLCC OUTBACK 14E

DOB:5/7/2017	Reg #:211699	BLACK	P
GUM HILL B41			Tattoo: SC14E
GUM HILL RED 530			Marb 0.5
GUM HILL Y046			Fat 0
DLCC STAMINA 138R			REA 0.24
DLCC BOWS 24Z			CW 32.9
DLCC BOWS 118U			RB 0.9
Act BW:89	Adj WW:	WW Ratio:	Act YW:1005
CED	BW	WW	YW
-1.3	4.1	42	86
Milk	MWW	CEM	
25	46	0.2	
Leachman \$Profit: N/A			



LOT 39

LOT 39 - DLCC ESTEBAN 79E

DOB:4/4/2017	Reg #:213126	BLACK	P
EGL U672			Tattoo: DLCC79E
LCOC NORTHERNWIND U092Z			Marb 0.1
LCOC STABILIZER PS009			Fat 0.01
DLCC SHUR LOC 99W			REA 0.2
DLCC CLAIRE 72Z			CW 23
DLCC CLAIRE 12L *			RB 0.7
Act BW:68	Adj WW:619	WW Ratio:105	Act YW:1140
CED	BW	WW	YW
1.4	0.9	37	69
Milk	MWW	CEM	
27	45	1	
Leachman \$Profit: \$13,466			

Extra length, extra shape, with big feet and good structure. Plus a WW Ratio of 105.

LOT 40 - DLCC CABALLERO 2E

DOB:3/6/2017	Reg #:213318	BLACK	P
DLCC MANHATTAN 33Z			Tattoo: WS02E
DLCC CABALLERO 27C			Marb 0.6
DLCC MS REFLECTION 69R			Fat 0.03
DLCC XX DAM 102Z			REA 0.23
			CW 22.9
			RB 0.5
Act BW:89	Adj WW:621	WW Ratio:100	Act YW:1245
CED	BW	WW	YW
	2.1	36	73
Milk	MWW	CEM	
24	41		
Leachman \$Profit: N/A			

LOT 41 - DLCC CABALLERO 3E

DOB:3/9/2017	Reg #:213319	BLACK	P
DLCC MANHATTAN 33Z			Tattoo: WS03E
DLCC CABALLERO 27C			Marb 0.6
DLCC MS REFLECTION 69R			Fat 0.02
DLCC SIMM COMM DAM 108Z			REA 0.23
			CW 22.3
			RB 0.6
Act BW:91	Adj WW:617	WW Ratio:100	Act YW:1345
CED	BW	WW	YW
	2.5	36	73
Milk	MWW	CEM	
22	40		
Leachman \$Profit: N/A			

Bigger outline and bigger ended. 3E is correct and stout structured example of using Simmental as your preferred cross.



HONEST CATTLE, HAPPY CORGIS

Puppies Available Soon

Join our Waiting List

We will have two litters available this summer.

The first group will be ready May 11th

The second group will be ready May 24th

If you are interested in purchasing a puppy from us let us know so we can add you to our waiting list. Once both females have their puppies we will contact our current waiting list. Note: We may not have enough puppies to fill every request. However we do plan to add another female this year and will hopefully have another litter soon. Visit our website to add your name to the waiting list.

www.DLCCRanch.com/Corgis

Both groups are sired by our male "Hub"



PUPPIES FROM FALL 2016 LITTER



LOT 42 - DLCC MONTANA ELIOT E97

DOB:4/7/2017	Reg #:212667	RED	P
DLCC SHUR LOC 99W			Tattoo: E97
DLCC ROBIN HOOD 10Z			Marb 0.7
MJB SASSY 7532T *			Fat 0.01
CCN RED ANGUS DAM X63			REA 0.17
			CW 27.4
			RB 0.6
Act BW:85	Adj WW:	WW Ratio:	Act YW:1335
CED	BW	WW	YW
0.6	1	45	82
Milk	MWW	CEM	
22	44	1.1	
Leachman \$Profit: N/A			

LOT 43 - DLCC EDGE 90E

DOB:4/10/2017	Reg #:213302	BLACK	P
EGL U672			Tattoo: DLCC90E
LCOC NORTHERNWIND U092Z			Marb
LCOC STABILIZER PS009			Fat
DLCC SHUR LOC 99W			REA
DLCC SHULOC BS029			CW
DLCC BS029 STABILIZER FEMALE			RB
Act BW:68	Adj WW:517	WW Ratio:88	Act YW:1085
CED	BW	WW	YW
	0.9	22	46
Milk	MWW	CEM	
5	16		
Leachman \$Profit: N/A			

LOT 44 - DLCC MANHATTAN 94E

DOB:4/11/2017	Reg #:213065	BLACK	P
TLC MACRAE 945X			Tattoo: DLCC 94E
DLCC MANHATTAN 33Z			Marb 0.6
DLCC CALIFORNIA GIRL 92X *			Fat 0.01
RATY MULTIPLE SIRE GROUP 1			REA 0.17
RR MONTANA TREASURE 157B			CW 29.2
RATY 157 DAM			RB 0.6
Act BW:87	Adj WW:609	WW Ratio:103	Act YW:1165
CED	BW	WW	YW
-0.8	3.4	50	89
Milk	MWW	CEM	
32	57	-0.1	
Leachman \$Profit: \$13,686			



94 E is balanced right and hits you with the herd bull stature that will do nothing but add pounds to the next generation.

Tried and True

Ritchey Ear Tags have been made in the good ole USA since 1964. Just like Old Glory, our tags have stood the test of time and have proven themselves faithful and true.

Ritchey's dual-colored, engravable tags allow for permanent numbering.

Ritchey EST. 1964
Livestock ID
1-800-EAR-TAGS
www.ritcheytags.com

Follow Us on Facebook

"Ritchey Ear Tags is our trusted source for livestock ID. If there is ever an issue they remedy immediately and will get tags to you in no time at all. We appreciate their product and more importantly their friendship. Going back to the Triple H days, as long as we've been in business our cowherd has worn Ritchey tags."

-Dar & Lynn



LOT 45 - DLCC ED 77E

DOB: 4/3/2017	Reg #:213125	BLACK	P	Tattoo:DLCC77E
---------------	--------------	-------	---	----------------

EGL U672

LCOC NORTHERNWIND U092Z

LCOC STABILIZER PS009

BC PROGRESS 315U

DLCC PERFECT ENUF 16A

DLCC PERFECT ENUF 4M

Act BW: 91			Adj WW: 585			WW Ratio:99			Act YW:1170		
CED	BW	WW	YW	Milk	MWW	CEM	Marb	Fat	REA	CW	RB
-1.7	3.7	42	87	25	46	0.4	0.7	0	0.25	31.3	0.8

Leachman \$Profit: \$11,029

77E has a show bull look with his extra sleek front end and ideal hip and hind leg structure and combines it with herd bull shape and power from end to end. Look for him to make stylish sons and daughters that have an extra 30 pounds of carcass weight. LCOC Stabilizer on the top side and BC Progress on the maternal side.



LOT 46 - DLCC EMERSON 5E

DOB:2/25/2017	Reg #:213107	BLACK	P			
SYDGEN C C & 7		Tattoo:DLCC5E				
T C A VISIONARY 158		Marb	1			
T C A TREASURE 0699 601		Fat	0.01			
MMM UNTOUCHABLE W810		REA	0.15			
DLCC CRISSY 25C		CW	24.1			
DLCC RED ANGUS		RB	0.6			
Act BW:73	Adj WW:529	WW Ratio:90	Act YW:1109			
CED	BW	WW	YW	Milk	MWW	CEM
2.6	-0.1	36	68	18	36	1.2
Leachman \$Profit: \$10,436						

Need some calving ease? Untouchable and Visionary in the pedigree with a low birth EPD.

LOT 47 - DLCC RED GUY 68E

DOB:4/1/2017	Reg #:213039	BLACK	P			
HOOKS TRINITY 9T		Tattoo: DLCC 68E				
LCOC TRINITY JO64B		Marb	0.2			
LAM STABILIZER SG841		Fat	0			
DLCC SHUR LOC 99W		REA	0.22			
DLCC BELLE 115B		CW	24.5			
DLCC COMMERCIAL DAM 52		RB	0.8			
Act BW:59	Adj WW:552	WW Ratio:90	Act YW:1010			
CED	BW	WW	YW	Milk	MWW	CEM
	-0.6	23	40	17		
Leachman \$Profit: \$6,345						

Another chance for a calving ease bull, with an actual birth of 59 pounds.

LOT 48 - DLCC TESTIFY 9E

DOB:3/2/2017	Reg #:213075	BLACK	P			
HOOKS TRINITY 9T		Tattoo: DLCC9E				
LEACHMAN TESTIFY D003Z		Marb	0.9			
HXC 582R		Fat	0.01			
DLCC DODGE CITY 78Y		REA	0.22			
DLCC KARA 87C		CW	34.5			
A-E KARA 077K		RB	0.7			
Act BW:79	Adj WW:650	WW Ratio:110	Act YW:924			
CED	BW	WW	YW	Milk	MWW	CEM
2.2	0.6	58	99	25	54	0.6
Leachman \$Profit: \$11,576						

Low birth and big weaning with a ratio of 110.

LOT 49 - DLCC EVER CLEAR 73E

DOB:4/2/2017	Reg #:213124	BLACK	P			
EGL U672		Tattoo: DLCC73E				
LCOC NORTHERNWIND U092Z		Marb	0.5			
LCOC STABILIZER PS009		Fat	0.02			
LEACHMAN PORTERHOUSE L094W		REA	0.17			
DLCC FROSTY 13A		CW	21.7			
FROSTY IN FOCUS H119		RB	0.6			
Act BW:65	Adj WW:611	WW Ratio:100	Act YW:1130			
CED	BW	WW	YW	Milk	MWW	CEM
	-1.5	53	78	24		
Leachman \$Profit: \$11,763						

DLCC Frosty 13A stems from the Schiefelbein Frosty cow we purchased and is one of the best cow families we own.

LOT 50 - DLCC DISCIPLE 105E

DOB:5/1/2017	Reg #:213137	BLACK	P			
G A R PROPHET		Tattoo: DLCC105E				
BRUNING DISCIPLE 475		Marb	0.75			
B F O C C MARTIN O J 675		Fat	0.02			
LEACHMAN YOSEMITE X730Y		REA	0.49			
DLCC FROSTY 9C		CW				
DLCC FROSTY 13A		RB				
Act BW:62	Adj WW:742	WW Ratio:112	Act YW:1100			
CED	BW	WW	YW	Milk	MWW	CEM
	-1.2	62	98	26		
Leachman \$Profit: \$16,310						

We feel that showcasing the Poundmaker effect is crucial to growth in the breed. Here is a son out of Bruning Disciple, a GAR Prophet son.



LOT 49





LOT 51 - DLCC EXTRA 55E

DOB: 03/16/2017	Reg #: Pending	Black	P	Tattoo: DLCC55E
-----------------	----------------	-------	---	-----------------

Connealy Comrade 1385

B/R Comrade 482

Three Trees Barbara 1572

GCC Black Watch Z600

Bruning Elba 1105

SandPoint Elba 3050

Act BW: 67			Adj WW: 731			WW Ratio:			Act YW:1255		
CED	BW	WW	YW	Milk	MWW	CEM	Marb	Fat	REA	CW	RB

Leachman \$Profit: N/A

Traditionally we are not in the Angus seedstock business, but we never turn down the opportunity to get our hands on good cattle. Our acquisition of two Bruning females was one of the best descisions we made, the proof is in the calves. Extra 55E is one of the biggest topped and most massive bulls in the offering. Although Angus genetics is not new to our sale, he's the kind and the quality we are proud to offer for our first purebred Angus bull. Data will be available in the supplement.





LOT 52 - DLCC ENTOURAGE 62E

DOB: 3/20/2017	Reg #: Pending	Black	P	Tattoo: DLCC62E
----------------	----------------	-------	---	-----------------

Barstow Cash

WAR Cash C410 T044

WAR In Focus T044 5280

GCC Black Watch Z600

Bruning Young Lucy 1115

Bruning Young Lucy 1943

Act BW: 82			Adj WW: 632			WW Ratio:			Act YW:1085		
CED	BW	WW	YW	Milk	MWW	CEM	Marb	Fat	REA	CW	RB

Leachman \$Profit: N/A

The second of our purebred Angus bulls to sell, and out of the second Bruning female we purchased. Entourage 62E is about as thick as he is tall with tons of mass and shape. Entourage brings the benefits of the Bruning cowherd coupled with the standout pedigree from Barstow Cash. Data will be available in the supplement.



SPECIAL LOT 53

Choice of 2017 Fall Bull Calves

Want first dibs on our 2017 September and October born bull calves?

We have 9 bull calves to offer, all of them are sired by DLCC Coulee 97C (Highest Selling Dodge City 78Y Son).

Calves were weaned the first week of April. The EPD's generated have birth weight as the only observed trait. These calves were not fertility tested nor ultrasounded. Buyer can assume ownership immediately, however we will not begin the guarantee until they are least 1 year of age. These will be the first Coulee sons to sell ever.

DLCC ESPRIT 146E							213159
Dam: DLCC DUDE 129Y							09/23/2017
BW	WW	YW	SC	Milk	MWW	\$Profit	
1	50	87	-0.1	29	54	\$18,180	

DLCC EPIC 144E							213176
Dam: DLCC NATALIE 49X							09/22/2017
BW	WW	YW	SC	Milk	MWW	\$Profit	
1.7	59	101	-0.1	28	58	\$17,867	

DLCC BIG WIG 162E							213168
Dam: DLCC AMBER 3W							10/20/2017
BW	WW	YW	SC	Milk	MWW	\$Profit	
3.5	53	96	0.1	31	57	\$17,922	

DLCC ELLIS 151E							213167
Dam: DLCC PENNI 109A							10/01/2017
BW	WW	YW	SC	Milk	MWW	\$Profit	
0.1	49	82	0.1	32	56	\$17,633	

DLCC ETHAN 142E							213158
Dam: DLCC SANSA 128X							09/18/2017
BW	WW	YW	SC	Milk	MWW	\$Profit	
3	56	99	0.3	36	64	\$17,617	

DLCC EMBER 145E							213178
Dam: DLCC KIT KAT 63U							09/23/2017
BW	WW	YW	SC	Milk	MWW	\$Profit	
-0.5	47	84	0	24	48	\$17,530	

DLCC EVER READY 156E							213161
Dam: DLCC SHOWGIRL 109Z							10/08/2017
BW	WW	YW	SC	Milk	MWW	\$Profit	
0.1	46	80	0	33	56	\$14,819	

DLCC WALK AWAY 148E							213179
Dam: DLCC BRIE 61Y							09/25/2017
BW	WW	YW	SC	Milk	MWW	\$Profit	
0.7	54	91	0	34	61	\$15,407	

DLCC BRAVO 143E							213177
Dam: DLCC PIPPA 107Z							09/22/2017
BW	WW	YW	SC	Milk	MWW	\$Profit	
1.4	52	90	-0.1	28	54	\$14,692	



DLCC COULEE 97C



LOT 54 - ROYAL DELTA RBG 602D

DOB: 9/28/2016	Reg #:212351	BLACK	P	Tattoo: RBG602D
----------------	--------------	-------	---	-----------------

VL APOLLO 324A

DLCC SHUR LOC 99W

DLCC DLCC COCOA 46Z

DLCC COCA 78U

Act BW: 73			Adj WW: 767			WW Ratio:100			Current:1890		
CED	BW	WW	YW	Milk	MWW	CEM	Marb	Fat	REA	CW	RB
0.3	1.9	33	69	22	39	0.8	0.1	0	0.23	24.1	0.9



Royal Delta RBG 602D is a striking herd sire candidate with notable muscle expression, remarkable structure, and eye-catching profile. His neat pedigree is backed with the material power of DLCC Cocoa 46Z, the 2014 NWSS Grand Champion Jr Female and Res Champion Purebred Female. A maternal sibling, Royal Cocoa Bean 501C, was the 2017 NWSS Grand Champion Poundmaker Female. Delta is a preeminent example of of Cocoa’s work. His sire, VL Apollo 324A, is a purebred Limousin that has been used heavily at Wulf Cattle because of his capability to transmit a sound phenotype and easy fleshing ability. Delta was named Res Champion Poundmaker bull at the 2018 NWSS. **Consigned by Wiley Fanta**



LOT 55 - DLCC DARIUS 140D

DOB:10/29/2016	Reg #:210974	RED	P
DLCC PATRIOT 51Y			Tattoo: DLCC140D
DLCC BATTLECRY 27B			Marb -0.6
DLCC TOPAZ 20Y *			Fat 0
DLCC PATRIOT 51Y			REA 0.33
DLCC PENNI 109A			CW 29.5
DLCC AMANDA'S PENNY 55K			RB 1.2
Act BW:69	Adj WW:	WW Ratio:	Current:1415
CED	BW	WW	YW
0.3	1.7	42	74
Milk	MWW	CEM	
36	57	1.1	
Leachman \$Profit: \$16,756			

LOT 56 - DLCC WELLINGTON 11D

DOB:9/29/2016	Reg #:211708	BLACK	P
GUM HILL B41			Tattoo: SC11D
GUM HILL RED 530			Marb 0.3
GUM HILL Y046			Fat 0
DLCC STAMINA 138R			REA 0.25
DLCC SUSIE Q 24Y			CW 31
DLCC BLACK LADY 134K			RB 1
Act BW:73	Adj WW:	WW Ratio:	Current:1485
CED	BW	WW	YW
-1.3	3.9	35	81
Milk	MWW	CEM	
24	41	-0.5	
Leachman \$Profit: N/A			



LOT 57

LOT 57 - DLCC D0647

DOB:3/25/2016	Reg #:Pending	BLACK	P
EGLU672			Tattoo: D0647
LCOC Northern Wind U092Z			Marb
LCOC Stabilizer PS009			Fat
DLC Royal Lad 1139			REA
DLCC 647B			CW
DLCC Red Angus			RB
Act BW:	Adj WW:654	WW Ratio:	Act YW:1640
CED	BW	WW	YW
Milk	MWW	CEM	
Leachman \$Profit: \$11,763			

A striking and attractive 2-yr old bull, a pedigree going back to DLC Royal Lad 1139. Data will be available in the supplement.

VOLUME DISCOUNTS
AVAILABLE

A purchase of 5 or more bulls will receive a volume discount of 5% off the total bill. Any cattle taken home within a week of the sale will receive \$100 off total bill.

Need semen? Bring your tank and receive 15% off a semen purchase on sale day.

FREE DELIVERY
NATIONWIDE

If you qualify, we will deliver your bulls free of charge anywhere in the country. Only one of the following must be met.

A purchase of 3 or more bulls

A purchase total in excess of \$5000

You are within 400 miles of our location

We can put together a group of cattle with a common destination



LOT 58 - DLCC ECHO 31E

DOB: 3/10/2017	Reg #:213018	BLACK	P	Tattoo: DLCC31E
----------------	--------------	-------	---	-----------------

DLCC ASTOUND 48S

MMM UNTOUCHABLE W810

BRANDY CREEK 68J *

DLCC BLACK ENUF 127J

DLCC MS REFLECTION 69R

DLCC DESIGN 34K

Act BW: 69			Adj WW: 576			WW Ratio:100			Act YW:945		
CED	BW	WW	YW	Milk	MWW	CEM	Marb	Fat	REA	CW	RB
3.4	0.5	52	96	24	50	1.5	0.2	0.01	0.25	35.6	0.8

Leachman \$Profit: \$15,500



31E is a great place to start for our female sale, both phenotypically and genetically, as she possesses the \$Profit and carcass numbers that we have touted in the bulls above her. Cattle have to move to do their job and when she does it's flawlessly. She was Spring calf champion at Denver and has come on even stronger in the last couple months. We should be the ones using her to take our program to the next level, but this year we are offering the entire heifer calf string we exhibited at Denver.





LOT 59 - JP EUREKA 76E

DOB: 3/24/2017	Reg #:212517	RED	P	Tattoo: JP76E
----------------	--------------	-----	---	---------------

DLCC SHUR LOC 99W

DLCC TWO STEP 84B

DLCC DANCER 141T *

DLCC CHANCE 52X

JP ZEVA 27Z

JP TICKEL 08T *

Act BW: 94			Adj WW: 526			WW Ratio:99			Act YW:886		
CED	BW	WW	YW	Milk	MWW	CEM	Marb	Fat	REA	CW	RB
-1.7	5.4	44	86	23	45	1.3	-0.6	0	0.31	32.6	1.2

Leachman \$Profit: N/A

What a power female. A daughter of DLCC Two Step who makes his mark on the breed with shape and stoutness, and 76E is no exception. She manages to put all that oomph into a sweet balanced package with a cocky look from the side. Not only will she turn heads in a halter, but her most exciting days will be making stout shapely calves with look and eye appeal. **Consigned by Joel Popken.**





LOT 60 - DLCC EPIC 95E

DOB: 4/12/2017	Reg #:213104	BLACK	P	Tattoo: DLCC 95E
----------------	--------------	-------	---	------------------

DLCC DODGE CITY 78Y
DLCC COWBOY JO 81C
 DLCC KATARINA 67Z
 MJB LEGEND 338X
DLC LEGEND LASS 414
 DLC ROCKETTE 114 *

Act BW: 82			Adj WW: 608			WW Ratio:106			Act YW:844		
CED	BW	WW	YW	Milk	MWW	CEM	Marb	Fat	REA	CW	RB
0.1	3.3	51	96	30	56	0.8	1.1	0.03	0.22	30.3	0.5

Leachman \$Profit: \$14,327

Complete, functional, balanced. Writing anything else seems like we are treating you as if you can't see that 95E is ideal, backed with body volume and structural correctness. Out of the popular Cowboy Jo she offers a unique pedigree as well, going back to the Dahl herd of Gackle, ND.





LOT 61 - DLCC MONTANA ESMER E78

DOB: 4/3/2017	Reg #:212666	RED	P	Tattoo: E78
---------------	--------------	-----	---	-------------

DLCC PATRIOT 51Y

DLCC BATTLECRY 27B

DLCC TOPAZ 20Y *

CCN RED ANGUS DAM A23

Act BW: 78			Adj WW:			WW Ratio:			Act YW:828		
CED	BW	WW	YW	Milk	MWW	CEM	Marb	Fat	REA	CW	RB
0.8	0.8	35	69	26	44	0.6	0.5	0.01	0.24	24.4	0.8

Leachman \$Profit: N/A

Too many people look at a sweet necked one and get stuck, E78 is a rare package that combines that cool front with correct angles and body volume that will also translate into a productive female. She keeps her head jacked up when she moves and is backed by a program that prides itself on functional females. Why not buy a cow and get the show heifer for free?





LOT 62 - DLCC MISS KITTY 12E

DOB: 3/4/2017	Reg #:213046	RED	P	Tattoo:DLCC 12E
---------------	--------------	-----	---	-----------------

SBCC WOMANIZER 9137
DLCC DODGE CITY 78Y
 DLCC PERFECT ENUF 28W
 DLCC WHIPLASH 1Y
DLCC ANITA 30A
 DLCC RED ANGUS

Act BW: 69			Adj WW: 587			WW Ratio:102			Act YW:880		
CED	BW	WW	YW	Milk	MWW	CEM	Marb	Fat	REA	CW	RB
2.3	1.3	47	84	27	51	1.3	1.2	0.03	0.17	31.6	0.3

Leachman \$Profit: \$9,449

Don't let her extra femininity fool you, backed by DLCC Dodge City there is plenty of power and brood cow potential here. 12E initially hits as one of the more elegant females, but she is correct in her build and that translates to her having the rib shape and body volume to be a herd building cow.





LOT 63 - DLCC ELLA 8E

DOB: 3/2/2017	Reg #:213089	BLACK	P	Tattoo: DLCC 8E
---------------	--------------	-------	---	-----------------

DLCC DODGE CITY 78Y

DLCC COPY CAT 69C

DLCC TOPAZ 20Y *

RATY MULTIPLE SIRE GROUP 1

RR MONTANA TREASURE 159B

RATY 159 DAM

Act BW: 70			Adj WW: 609			WW Ratio:106			Act YW:1075		
CED	BW	WW	YW	Milk	MWW	CEM	Marb	Fat	REA	CW	RB
1.2	1.9	48	86	34	58	0.7	0.6	0.01	0.28	27.1	0.8

Leachman \$Profit: \$15,834

8E did not make the trip to Denver, trailer space was the limiting factor but as you can see she fits the mold of our show string to a “T”. Structurally correct, up headed and feminine with the sweep and shape to her rib that screams COW. Not only is she the most massive bodied of our show prospects but she stands on the biggest foot. Trends like neck and hair come in and out of style, but stout broody females who are correct in their structure are here for the long haul.



OPEN HEIFERS



LOT 64 - DLCC EVER AFTER 96E

DOB:4/12/2017	Reg #:213066	BLACK	P			
TLC MACRAE 945X			Tattoo: DLCC 96E			
DLCC MANHATTAN 33Z			Marb 0.6			
DLCC CALIFORNIA GIRL 92X *			Fat 0.01			
RATY MULTIPLE SIRE GROUP 1			REA 0.15			
RR MONTANA TREASURE 152B			CW 22.7			
RATY 152 DAM			RB 0.6			
Act BW:64	Adj WW:565	WW Ratio:99	Act YW:720			
CED	BW	WW	YW	Milk	MWW	CEM
1.2	0.7	39	71	30	50	0.3
Leachman \$Profit: \$16,002						

LOT 65 - DLCC EDDA 11E

DOB:3/3/2017	Reg #:213134	RED	P			
DLCC DODGE CITY 78Y			Tattoo:DLCC 11E			
DLCC COWBOY JO 81C			Marb 0.4			
DLCC KATARINA 67Z			Fat 0.03			
DLCC SHUR LOC 99W			REA 0.3			
DLCC GEMMA 113B			CW 22.6			
DLCC GEMMA 104W *			RB 0.7			
Act BW:66	Adj WW:497	WW Ratio:87	Act YW:736			
CED	BW	WW	YW	Milk	MWW	CEM
2.3	0.1	28	62	28	42	1.3
Leachman \$Profit: \$12,382						

LOT 66 - DLCC GEMMA 91E

DOB:4/10/2017	Reg #:213118	RED	P			
TLC MACRAE 945X			Tattoo: DLCC91E			
DLCC MANHATTAN 33Z			Marb 0.3			
DLCC CALIFORNIA GIRL 92X *			Fat 0.01			
DLCC SHUR LOC 99W			REA 0.2			
DLCC GEMMA 13Z			CW 26.5			
DLCC GEMMA 104W *			RB 0.7			
Act BW:73	Adj WW:541	WW Ratio:94	Act YW:744			
CED	BW	WW	YW	Milk	MWW	CEM
1.2	1.7	38	72	35	54	0.4
Leachman \$Profit: \$17,704						

LOT 67 - DLCC MANDI 125E

DOB:6/2/2017	Reg #:213028	BLACK	P			
DLCC SHUR LOC 99W			Tattoo: DLCC125E			
DLCC DURANGO 26Z			Marb 0.1			
DLCC MANDI 55U *			Fat 0.01			
DLCC WHIPLASH 1Y			REA 0.31			
DLCC MANDI 40A			CW 38.9			
DLCC MANDI 2X *			RB 1.1			
Act BW:70	Adj WW:558	WW Ratio:115	Act YW:676			
CED	BW	WW	YW	Milk	MWW	CEM
0.5	2.6	54	99	29	57	2
Leachman \$Profit: \$18,885						

LOT 68 - DLCC GRACIE 103E

DOB:4/20/2017	Reg #:213069	BLACK	S			
TLC MACRAE 945X			Tattoo: DLCC103E			
DLCC MANHATTAN 33Z			Marb 0.5			
DLCC CALIFORNIA GIRL 92X *			Fat 0.01			
MJB SHUR LOC 106S			REA 0.21			
DLCC GRACIE 80Y *			CW 30.6			
DLCC PROMISE 49S			RB 0.8			
Act BW:62	Adj WW:620	WW Ratio:108	Act YW:830			
CED	BW	WW	YW	Milk	MWW	CEM
2.7	0.7	45	85	34	57	0.8
Leachman \$Profit: \$21,399						

Do we have to mention the \$Profit? We put Gracie in this sale spot to see if you were paying attention.



LOT 69 - DLCC SHOWGIRL 123E

DOB:5/22/2017	Reg #:213054	RED	P
SBCC WOMANIZER 9137			Tattoo: DLCC123E
DLCC DODGE CITY 78Y			Marb 1.3
DLCC PERFECT ENUF 28W			Fat 0.03
DLCC BLACK ENUF 127J			REA 0.25
DLCC SHOWGIRL 23N			CW 27.7
WLE SHOW GIRL 2G *			RB 0.4
Act BW:77	Adj WW:633	WW Ratio:100	Act YW:706
CED	BW	WW	YW
0.4	2.9	45	90
Milk	MWW	CEM	
27	50	0.5	
Leachman \$Profit: \$13,741			

LOT 70 - DLCC CHECKERS 97E

DOB:4/12/2017	Reg #:213105	BLACK	P
DLCC ADMIRAL 12A			Tattoo: DLCC 97E
DLCC CHECKERS 12C			Marb 0.3
DLCC POPPY 108Z			Fat 0
RP WAR WAGON 72W			REA 0.2
RP COFFEE 55C			CW 28
RP YOO LALA 26Y			RB 0.8
Act BW:54	Adj WW:495	WW Ratio:86	Act YW:728
CED	BW	WW	YW
3.7	-2.2	30	62
Milk	MWW	CEM	
24	39	1.9	
Leachman \$Profit: \$13,725			

LOT 71 - DLCC EVA JEAN 108E

DOB:5/3/2017	Reg #:213113	BLACK	P
SBCC WOMANIZER 9137			Tattoo: DLCC108E
DLCC DODGE CITY 78Y			Marb 1.3
DLCC PERFECT ENUF 28W			Fat 0.02
DLCC JUDGE 60Y			REA 0.21
DLCC AVA 74A			CW 26.2
DLCC CICI 18N			RB 0.4
Act BW:75	Adj WW:453	WW Ratio:79	Act YW:780
CED	BW	WW	YW
2.1	1.1	34	73
Milk	MWW	CEM	
23	40	0.6	
Leachman \$Profit: \$15,359			

LOT 72 - DLCC ENCHANTED 56E

DOB:3/16/2017	Reg #:213132	BLACK	P
DLCC DODGE CITY 78Y			Tattoo: DLCC56E
DLCC COPY CAT 69C			Marb 0.6
DLCC TOPAZ 20Y *			Fat 0.01
LEACHMAN YOSEMITE X730Y			REA 0.33
DLCC JAB 1B			CW 41.7
DLCC PUNCH 116Y			RB 0.9
Act BW:84	Adj WW:385	WW Ratio:67	Act YW:756
CED	BW	WW	YW
0.6	2.6	20	63
Milk	MWW	CEM	
34	44	0.5	
Leachman \$Profit: \$13,031			

Her maternal granddam is the Donor cow DLCC Punch 116Y. A thick-ended moderate heifer calf.

LOT 73 - DLCC JUST NIFTY 2E

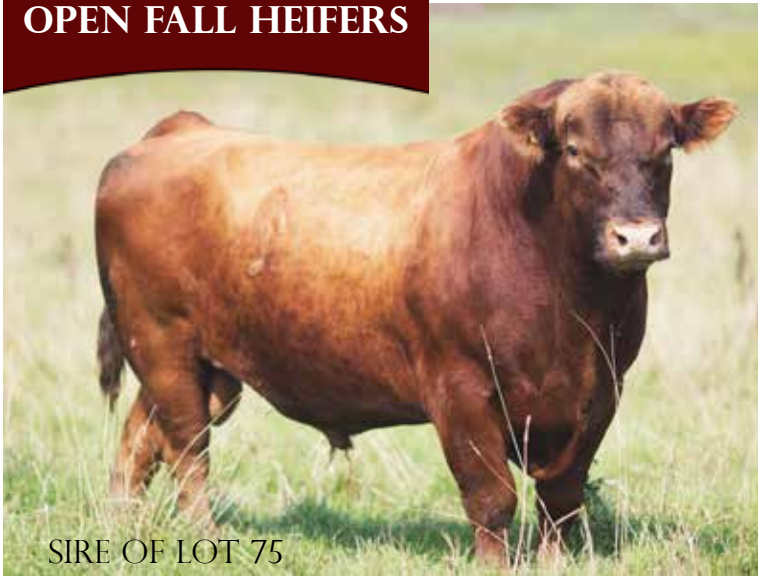
DOB:2/23/2017	Reg #:213293	BLACK	P
DLCC DODGE CITY 78Y			Tattoo: DLCC2E
DLCC COPY CAT 69C			Marb
DLCC TOPAZ 20Y *			Fat
DLCC SHUR LOC 99W			REA
DLCC JUST NIFTY 401B			CW
DLCC JUST NIFTY 123X			RB
Act BW:83	Adj WW:631	WW Ratio:110	Act YW:954
CED	BW	WW	YW
	4.8	60	109
Milk	MWW	CEM	
28	58		
Leachman \$Profit: N/A			

LOT 74 - DLCC DORIS 127E

DOB:6/3/2017	Reg #:213299	BLACK	P
G A R PROPHET			Tattoo: DLCC127E
BRUNING DISCIPLE 475			Marb
B F O C C MARTIN O J 675			Fat
DLCC CADET 19Y			REA
DLCC DORIS 079C			CW
DLCC 79 ANGUS DAM			RB
Act BW:63	Adj WW:626	WW Ratio:100	Act YW:704
CED	BW	WW	YW
	0.8	11	18
Milk	MWW	CEM	
6	12		
Leachman \$Profit: \$10,436			



OPEN FALL HEIFERS



SIRE OF LOT 75

LOT 75 - DLCC CHEROKEE 130E

DOB:6/15/2017	Reg #:213169	RED	P			
HOOKS TRINITY 9T			Tattoo: DLCC130E			
LCOC TRINITY JO64B			Marb 0.9			
LAM STABILIZER SG841			Fat 0.01			
DLCC DAKOTA LAD 38A			REA 0.22			
DLCC CHEROKEE 66C			CW 28.4			
DLCC CHEROKEE 1611A			RB 0.6			
Act BW:59	Adj WW:	WW Ratio:	Act YW:			
CED	BW	WW	YW	Milk	MWW	CEM
	0	50	84	23	48	
Leachman \$Profit: \$12,164						

LOT 76 - DLCC PEBBLES 132E

DOB:7/4/2017	Reg #:213170	BLACK	P			
DLCC SHUR LOC 99W			Tattoo: DLCC132E			
DLCC DURANGO 26Z			Marb 0.3			
DLCC MANDI 55U *			Fat 0.01			
DLC MR ROCK 41W			REA 0.31			
DLCC PEBBLES 55Y			CW 39			
DLCC ANGEL 41U			RB 1			
Act BW:65	Adj WW:	WW Ratio:	Act YW:			
CED	BW	WW	YW	Milk	MWW	CEM
	2.2	51	91	30	55	
Leachman \$Profit: \$19,179						

LOT 77 - DLCC CLAIRE 138E

DOB:9/7/2017	Reg #:213175	BLACK	P			
SBCC WOMANIZER 9137			Tattoo: DLCC138E			
DLCC DODGE CITY 78Y			Marb 1.2			
DLCC PERFECT ENUF 28W			Fat 0.03			
DLCC JUDGE 77A			REA 0.23			
DLCC CLAIRE 98C			CW 31.6			
DLCC CLAIRE 25A			RB 0.5			
Act BW:59	Adj WW:	WW Ratio:	Act YW:			
CED	BW	WW	YW	Milk	MWW	CEM
	0.6	44	86	27	49	
Leachman \$Profit: \$16,127						

LOT 78 - DLCC CLAIRE 164E

DOB:10/1/2017	Reg #:213181	BLACK	P			
DLCC DODGE CITY 78Y			Tattoo: DLCC164E			
DLCC COULEE 97C			Marb 0.8			
DLCC CLARE 1X			Fat 0.02			
DLCC SHUR LOC 99W			REA 0.21			
DLCC CLAIRE 25A			CW 31.5			
DLCC LADI GIRL 43R			RB 0.6			
Act BW:65	Adj WW:	WW Ratio:	Act YW:			
CED	BW	WW	YW	Milk	MWW	CEM
	1.6	48	88	28	52	
Leachman \$Profit: \$16,323						

LOT 79 - DLCC LA DI DA 165E

DOB:10/29/2017	Reg #:213163	BLACK	P			
DLCC DODGE CITY 78Y			Tattoo: DLCC165E			
DLCC COULEE 97C			Marb 0.7			
DLCC CLARE 1X			Fat 0.02			
MJB SHUR LOC 106S			REA 0.18			
DLCC LA DI DA 113Z			CW 28			
DLCC LA DI DA 14K			RB 0.6			
Act BW:60	Adj WW:	WW Ratio:	Act YW:			
CED	BW	WW	YW	Milk	MWW	CEM
	-0.4	44	76	28	49	
Leachman \$Profit: \$17,947						

A sneak peak of what's to come next year with the DLCC Coulee 97C calves.

A second sneak peak of what's to come next year with the DLCC Coulee 97C calves. La Di Da family on the maternal side.





LOT 80 - DLCC GEMMA 131D

DOB: 9/25/2016	Reg #:210966	RED	P	Tattoo: DLCC131D
----------------	--------------	-----	---	------------------

TLC MACRAE 945X
DLCC MANHATTAN 33Z
 DLCC CALIFORNIA GIRL 92X *
 DLCC PIKACHU 33P
DLCC GEMMA 104W *
 DLCC PRECIOUS 113M *

Act BW: 59			Adj WW:			WW Ratio:			Act YW:1135		
CED	BW	WW	YW	Milk	MWW	CEM	Marb	Fat	REA	CW	RB
1.2	0.8	40	74	39	59	0.2	0.3	0.01	0.25	27.8	0.8

Leachman \$Profit: \$17,687



A balanced, functional cow that will do her job. Her mother is DLCC Gemma 104W, one of the great cow families on our operation. Backed by the data-power of Manhattan 33Z. A \$Profit of \$17,687, she offers a great opportunity to build your own complimentary mating.



BRED FALL HEIFERS



LOT 81 - DLCC JACKIE 125D

DOB:9/7/2016	Reg #:213307	BLACK	P			
TLC NEWT 945W			Tattoo: DLCC125D			
TLC YUKON 1047B			Marb			
TLC PIKA 1047			Fat			
KNN JACKPOT 15Y			REA			
TLC JACKIE 3206B			CW			
TLC SWEET MONTI 1206			RB			
Act BW:53	Adj WW:618	WW Ratio:100	Act YW:960			
CED	BW	WW	YW	Milk	MWW	CEM
	2.6	41	75	24	45	
Leachman \$Profit: \$N/A						

AI'd to LCOC Foundation G081D 12/4/2017. Pasture exposed to Bruning Disciple 475 (AA#: 18129117) 12/27/2017 - 2/10/2018.

LOT 82 - DLCC DAISY DUKE 127D

DOB:9/14/2016	Reg #:213309	RED	P			
TLC NEWT 945W			Tattoo: DLCC127D			
TLC YUKON 1047B			Marb			
TLC PIKA 1047			Fat			
TLC NEWT 945W			REA			
TLC DAISY DUKE 411B			CW			
TLC CAVVY 311N			RB			
Act BW:63	Adj WW:660	WW Ratio:107	Act YW:804			
CED	BW	WW	YW	Milk	MWW	CEM
	0.8	45	74	24	47	
Leachman \$Profit: \$N/A						

AI'd to DLCC Cowboy Jo 81C 12/4/2017. Pasture exposed to Bruning Disciple 475 (AA#: 18129117) 12/27/2017 - 2/10/2018.

LOT 83 - DLCC KIT KAT 128D

DOB:9/16/2016	Reg #:210951	BLACK	P				
TLC MACRAE 945X			Tattoo: DLCC128D				
DLCC MANHATTAN 33Z			Marb				
DLCC CALIFORNIA GIRL 92X *			Fat				
DLCC SURE THING 34P			REA				
DLCC KIT KAT 63U			CW				
DLCC BON BON 160N			RB				
Act BW:66	Adj WW:	WW Ratio:	Act YW:778				
CED	BW	WW	YW	Milk	MWW	CEM	
	1.6	1.5	46	84	27	50	0.6
Leachman \$Profit: \$18,312							

AI'd to LCOC Foundation G081D 12/4/2017. Pasture exposed to Bruning Disciple 475 (AA#: 18129117) 12/27/2017 - 2/10/2018.

LOT 84 - DLCC JUST NIFTY 138D

DOB:10/10/2016	Reg #:210967	BLACK	P				
TLC MACRAE 945X			Tattoo: DLCC138D				
DLCC MANHATTAN 33Z			Marb				
DLCC CALIFORNIA GIRL 92X *			Fat				
DLCC STAMINA 138R			REA				
DLCC JUST NIFTY 123X			CW				
FJ JUST NIFTY 317N			RB				
Act BW:77	Adj WW:	WW Ratio:	Act YW: 945				
CED	BW	WW	YW	Milk	MWW	CEM	
	-1.1	4.2	47	87	29	52	-0.4
Leachman \$Profit: \$N/A							

AI'd to DLCC Copy Cat 69C 12/4/2017. Pasture exposed to Bruning Disciple 475 (AA#: 18129117) 12/27/2017 - 2/10/2018.

LOT 85 - DLCC FUDGE 146D

DOB:10/7/2016	Reg #:210953	BLACK	P				
TLC MACRAE 945X			Tattoo: DLCC146D				
DLCC MANHATTAN 33Z			Marb				
DLCC CALIFORNIA GIRL 92X *			Fat				
MJB SHUR LOC 106S			REA				
DLCC FUDGE 118Y			CW				
DLCC MY MARIA 93L			RB				
Act BW:84	Adj WW:	WW Ratio:	Act YW:780				
CED	BW	WW	YW	Milk	MWW	CEM	
	-0.3	4.4	49	86	28	53	0
Leachman \$Profit: \$15,177							

AI'd to LCOC Foundation G081D 12/4/2017. Pasture exposed to Bruning Disciple 475 (AA#: 18129117) 12/27/2017 - 2/10/2018.



LOT 86 - DLCC CRICKET 113C

DOB:10/24/2015	Reg #:208871	RED	P
EGL U672			Tattoo: DLCC113C
LCOC NORTHERNWIND U092Z			Marb -0.2
LCOC STABILIZER PS009			Fat 0
DLCC PATRIOT 51Y			REA 0.28
DLCC RADICAL 103A			CW 21.8
LCHMN DEVONAIRE J9018			RB 1
Act BW:86	Adj WW:527	WW Ratio:98	Act YW:1045
CED	BW	WW	YW
-0.5	3.5	40	70
Milk	MWW	CEM	
25	45	0.6	
Leachman \$Profit: \$9,116			

AI'd to DLCC Copy Cat 69C 12/4/2017. Pasture exposed to Bruning Disciple 475 (AA#: 18129117) 12/27/2017 - 2/10/2018.

LOT 87 - BAR E MISS 832

DOB:10/16/2016	Reg #:Pending	RED	P
MMM UNTOUCHABLE W810			Tattoo: D832
MJB BLACKOUT 380A			Marb
MJB SUNLIGHT 6664S			Fat
BC ROCK 384X			REA
BAR/E DESTINY A826			CW
MJB DESTINY 9605W			RB
Act BW:65	Adj WW:434	WW Ratio:	Act YW:818
CED	BW	WW	YW
Milk	MWW	CEM	
Leachman \$Profit: N/A			

AI'd to DLCC Cowboy Jo 81C 12/4/2017. Pasture exposed to Bruning Disciple 475 (AA#: 18129117) 12/27/2017 - 2/10/2018.

LOT 88 - BAR E MISS 846

DOB:10/23/201+6	Reg #: Pending	BLACK	P
DLC THE ROCK 52			Tattoo:E846
BC ROCK 384X			Marb
BC NORTHERN LIGHT 3533N			Fat
DLCC OPEN RANGE 3R			REA
BAR/E X-118			CW
DLCC BLK CRICKET 100P			RB
Act BW:72	Adj WW:540	WW Ratio:	Act YW:778
CED	BW	WW	YW
Milk	MWW	CEM	
Leachman \$Profit: N/A			

AI'd to DLCC Cowboy Jo 81C 12/4/2017. Pasture exposed to Bruning Disciple 475 (AA#: 18129117) 12/27/2017 - 2/10/2018. Consigned by Bar E Cattle Co.

LOT 89 - BAR E MISS 824

DOB:9/29/2016	Reg #:Pending	RED	P
DLC THE ROCK 52			Tattoo: E824
BC ROCK 384X			Marb
BC NORTHERN LIGHT 3533N			Fat
DLCC MOUNTAIN TIME 35T			REA
BAR/E X-811			CW
DLCC DESTINY 23S			RB
Act BW:67	Adj WW:456	WW Ratio:	Act YW:816
CED	BW	WW	YW
Milk	MWW	CEM	
Leachman \$Profit: N/A			

AI'd to DLCC Cowboy Jo 81C 12/4/2017. Pasture exposed to Bruning Disciple 475 (AA#: 18129117) 12/27/2017 - 2/10/2018. Consigned by Bar E Cattle Co.

DON'T FORGET
TO WATCH ONLINE

The sale will be broadcast online at

www.SuperiorLivestock.com

Follow along on sale day and register to become an online bidder. Contact our Superior rep for any questions you have.

Justin Warren.....970-367-0035





LOT 90 - DLCC AMBER 3W

DOB: 2/28/2009	Reg #:196273	RED	P	Tattoo: DLCC3W
----------------	--------------	-----	---	----------------

DLCC BLACK ENUF 127J

DLCC SURE ENUF

DLCC MANDI 18K

DLCC ASTOUND 75F

DLCC TARA 69S *

DLCC TARA 50L *

Act BW: 82			Adj WW: 664			WW Ratio:107					
CED	BW	WW	YW	Milk	MWW	CEM	Marb	Fat	REA	CW	RB
0.6	3.5	42	85	31	53	1.8	0.2	0.02	0.26	26.7	0.6

Leachman \$Profit: \$18,342



Not often to we let Donor cows go, DLCC Amber has left her mark on our herd, now it's time for her to make an impact on yours. With a solid, data-backed phenotype and a proven dam, Amber is the type of cow to bring value to your operation. Amber was also the 2010 Reserve National Champion Female, and 2011 National Champion Female.

Pasture exposed to LCOC Bullet S021D 12/6/2017 - 2/10/2017





LOT 91 - DLCC SIERRA 92Y

DOB: 5/7/2011	Reg #:200719	RED	P	Tattoo:DLCC92Y
---------------	--------------	-----	---	----------------

DLCC SURE ENUF
MJB SHUR LOC 106S
 MJB PROMISE 4550P
 DLCC LANDMARK 15R
DLCC NEVADA 92U
 DLCC SIERRA 82S

Act BW: 86			Adj WW: 660			WW Ratio:117					
CED	BW	WW	YW	Milk	MWW	CEM	Marb	Fat	REA	CW	RB
0.2	4.4	73	120	34	71	1.7	0.7	0.03	0.35	45.3	0.8

Leachman \$Profit: \$22,207

FULL OWNERSHIP
OR
SHARED OPPORTUNITY

Bidding will be for full ownership price. You can pick to pay half price, and allow us to retain half interest on Sierra. Possession will be yours, but should a bull or female sell of Sierra's, we will share the revenue after expenses.

Who do you know that offers the best cow on their place for sale? We went to the top of the list for \$Profit and found Sierra 92Y. With a \$Profit of \$22,207 (top 0.1%) she will bring value to your herd in an attractive package. We know she's good, now you have the opportunity to find out for yourself.

She will be available for delivery or flushing in September of 2018.



RANCHERS HELPING RANCHERS

*“The greatest **Success** we’ll ever know is helping **Others**”*



Starbuck Wildfire Relief

On March 6, 2017 the Starbuck Wildfire devastated over 662,687 acres in Kansas and Oklahoma, with additional fires affecting Texas and Colorado, and was registered as the largest wildfire in Kansas history. In Clark County alone, there was an estimated \$41 million attributed to losses in fencing. The fire took countless homes, thousands of livestock and seven lives, some of whom were cattle ranchers.

In our 25th Annual Production Sale we decided to offer 2 exclusive semen packages and donate the funds to the Kansas Livestock Association to benefit victims of those fires.

Montana Drought and Wildfire Relief

Starting in early July of 2017, the Montana wildfire season was the worst in history. Exacerbated by drought and heavy winds, over 21 wildfires burned over 1.2 million acres of land in the state. The fires, which largely went unnoticed by the mainstream media, set records for total acres burned, amount spent by the USDA to combat the fires (\$2.1 Billion), and coupled with the drought, left 53 of the 55 counties in the state declared as disaster areas.

In our current offering, we will once again offer a set of exclusive semen packages to donate the funds to the Montana Stockgrowers Foundation to aid cattlemen in future wildfire and drought disasters.





ELITE SEMEN PACKAGES

LOT 92A - DLCC BATTLECRY 27B

DOB:03/26/2014	Reg #:206340	RED	P				
10 STRAWS		DLCC SHUR LOC 99W		Tattoo: DLCC27B			
		DLCC PATRIOT 51Y		Marb	-0.4		
		DLCC GEMMA 104W		Fat	0.0		
		DLC MR ROCK 41W		REA	0.37		
		DLCC TOPAZ 20Y		CW	27.7		
		DLCC CLARE 73U		RB	1.2		
CED	BW	WW	YW	Milk	MWW	CEM	
0.8	2.2	38	71	38	57	0.7	

LOT 92B - DLCC BELMONT 25B

DOB:03/24/2014	Reg #:206413	BLACK	P				
10 STRAWS		DLCC SURE THING TOO 119T		Tattoo: DLCC25B			
		DLCC WHIPLASH 1Y		Marb	-0.3		
		DLCC DANCER 141T		Fat	0		
		DLCC OPEN RANGE 3R		REA	0.41		
		DLCC MANDI 2X		CW	48.8		
		DLCC MANDI 18K		RB	1.2		
CED	BW	WW	YW	Milk	MWW	CEM	
1.5	1.1	53	109	30	57	2.6	

LOT 92C - DLCC SURE THING TOO 119T

DOB:05/02/2007	Reg #:192106	BLACK	P				
5 STRAWS		DLCC BLACK ENUF 127J		Tattoo: DLCC119T			
		DLCC SURE-ENUF		Marb	1.5		
		DLCC MANDI 18K		Fat	0.01		
		DLCC BLACK ENUF 127J		REA	-0.03		
		DLCC PERFECT ENUF 4M		CW	30.7		
		DLCC BLACK LADY 06K		RB	0.3		
CED	BW	WW	YW	Milk	MWW	CEM	
	-0.3	49	80	27	52		

LOT 92D - DLCC BLACK ENUF 127J

DOB:05/15/1999	Reg #:169690	BLACK	P				
5 STRAWS		BA ACE 400		Tattoo: DLCC127J			
		MAPLE LEAF EBONY 11F		Marb	0.3		
		MAPLE LEAF BLACK BUTTONS		Fat	0.02		
		MRCO POWER PAC 330		REA	0.19		
		DLCC TILLY 67E		CW	18.0		
		DLCC SWEET LULLABY 5C		RB	0.5		
CED	BW	WW	YW	Milk	MWW	CEM	
	0.5	30	61	20	35		

DLCC Copy Cat 69C

Reg #: 208807
 DOB: 04/09/2015
 Fullblood

Sire: DLCC Dodge City 78Y
 Dam: DLCC Topaz 20Y
 Owned with Leachman Cattle of Colorado



CED	BW	WW	YW	Milk	MWW	CEM	Marb	Fat	REA	CW	RB
0.3	3.6	57	106	35	64	0.3	0.9	0.01	0.3	37.8	0.8

DLCC Stockman 39C

Reg #: 207902
 DOB: 03/27/2015
 Purebred

Sire: MMM Untouchable W810
 Dam: DLCC Promise 40U
 Owned by the Stockman cooperative



CED	BW	WW	YW	Milk	MWW	CEM	Marb	Fat	REA	CW	RB
2.2	2.3	68	126	30	64	1.4	0.5	-0.01	0.33	54.1	1.2

DLCC Dodge City 78Y

Reg #: 200720
 DOB: 04/22/2011
 Purebred

Sire: SBCC Womanizer 9137
 Dam: DLCC Perfect Enuf 28W
 Owned with Leachman Cattle of Colorado



CED	BW	WW	YW	Milk	MWW	CEM	Marb	Fat	REA	CW	RB
2.8	0.7	51	95	29	55	0.7	2.1	0.03	0.19	31.2	0.2



DLCC Two Step 84B

Reg #: 205508

DOB: 05/12/2014

Purebred

Sire: DLCC Shur Loc 99W

Dam: DLCC Dancer 141T

Owned by the Two Step Syndicate



CED	BW	WW	YW	Milk	MWW	CEM	Marb	Fat	REA	CW	RB
-2.3	5.2	50	90	22	47	1.6	-1.4	-0.01	0.32	39.1	1.5

DLCC Battlecry 27B

Reg #: 206340

DOB: 03/26/2014

Fullblood

Sire: DLCC Patriot 51Y

Dam: DLCC Topaz 20Y

Owned with C/N Ranch



CED	BW	WW	YW	Milk	MWW	CEM	Marb	Fat	REA	CW	RB
0.8	2.2	38	71	38	57	0.7	-0.4	0.0	0.37	27.7	1.2

DLCC Manhattan 33Z

Reg #: 201588

DOB: 04/02/2012

Purebred

Sire: TLC Macrae 945X

Dam: DLCC California Girl 92X

Owned with Hlusek Farms



CED	BW	WW	YW	Milk	MWW	CEM	Marb	Fat	REA	CW	RB
0.4	2.6	50	87	36	61	0.0	0.9	0.01	0.08	26.8	0.4



DLCC Durango 26Z

Reg #: 202828

DOB: 03/30/2012

Purebred

Sire: DLCCShur Loc 99W

Dam: DLCC Mandi 55U

Owned with Nichols Farms & Watinga Farms, AU



CED	BW	WW	YW	Milk	MWW	CEM	Marb	Fat	REA	CW	RB
0.9	2.5	53	97	28	55	-0.5	0.0	0.0	0.28	42.4	1.2

DLCC Cowboy Jo 81C

Reg #: 208816

DOB: 04/21/2015

Fullblood

Sire: DLCC Dodge City 78Y

Dam: DLCC Katarina 67Z

Owned with Leachman Cattle of Colorado

CED	BW	WW	YW	Milk	MWW	CEM	Marb	Fat	REA	CW	RB
2.9	0.2	36	77	28	46	1.5	1.3	0.05	0.31	26.2	0.2

Gum Hill Red 530

Reg #: 208776

DOB:

Fullblood

Sire: Gum Hill B41

Dam: Gum Hill Y046

Semen Cooperative with X-E Stock Ranch

CED	BW	WW	YW	Milk	MWW	CEM	Marb	Fat	REA	CW	RB
	3.9	34	75				0.2	0.0	0.19	26.3	0.9

NASDA EXPECTED PROGENY DIFFERENCES

2018 NASDA BREED AVERAGES FOR NON-PARENTS

CED	BW	WW	YW	Milk	MWW	CEM	Marb	Fat	REA	CW	RB
0.4	2.6	34.2	66.9	20.0	36.8	0.4	0.1	0.0	0.21	20.7	0.8

Calving Ease Direct CED - predicts the average difference in ease with which a sire's calves will be born when bred to first calf heifers. Expressed as percentage of unassisted births with a higher value indicating greater calving ease.

Birth Weight BW - Expressed in pounds. Based on the measure birth weight of progeny, adjusted for dam age. The lower the value the lighter the calf at birth and the lower the likelihood of a difficult birth. This is particularly important when selecting sires for use on heifers.

Weaning Weight WW - Expressed in pounds. Calculated from the weight of progeny. Values are adjusted to 205 days and for age of dam This EPD is the best single estimate of an animal's genetic merit for early growth.

Yearling Weight YW - Expressed in pounds. Calculated from the weight of progeny taken between 301 and 450 days of age, adjusted to 365 days and for age of dam. This EPD is the best single estimate of a sire's genetic merit for yearling weight.

Milk - Expressed in pounds. An estimate of an animal's milking ability. For sires, this EPD indicates the effect of the daughter's milking ability, inherited from the sire, on the weaning and yearling weights of her calves. For dams, it indicates her own milking ability.

Maternal Weaning Weight MWW - Expressed in pounds. A combination of Milk and Weaning EPDs and estimates the genetic merit of the animal to produce pounds of calf at weaning.

Maternal Calving Ease CEM - predicts the average ease with which a sire's daughters will calve as first-calf heifers when compared to the daughters of another sire in the same evaluation. Expressed as a percentage of unassisted births.

Marbling MARB - Expressed as a fraction of the difference in USDA marbling score of a sire's progeny compared to progeny of other sires.

Fat Thickness FT - Expressed in inches. A predictor of the differences in external fat thickness at the 12th rib (as measured between the 12th and 13th ribs) of a sire's progeny compared to progeny of other sires.

Ribeye Area REA - Expressed in square inches. A predictor of the difference in ribeye area of a sire's progeny compared to progeny of other sires.

Carcass Weight CW - Expressed in pounds, is a predictor of the differences in hot carcass weight of a sire's progeny compared to progeny of other sires.

Retail Beef Yield RB - Estimates the genetic differences between animals in percentage of retail beef yield for a standard carcass weight of 750 lb.

NOTES

THERE'S A LOT OF PEOPLE THAT HELP MAKE THIS SALE HAPPEN

Thank you to everyone who helped in the months leading up to the sale.

THANK YOU

CUSTOMERS. FRIENDS. FAMILY.





DLCC
—Ranch—
33424 183rd St.
Pierz, MN 56364

THE 26TH ANNUAL PRODUCTION SALE
SATURDAY, APRIL 28TH AT 3 P.M.
AT THE RANCH NEAR PIERZ, MN

